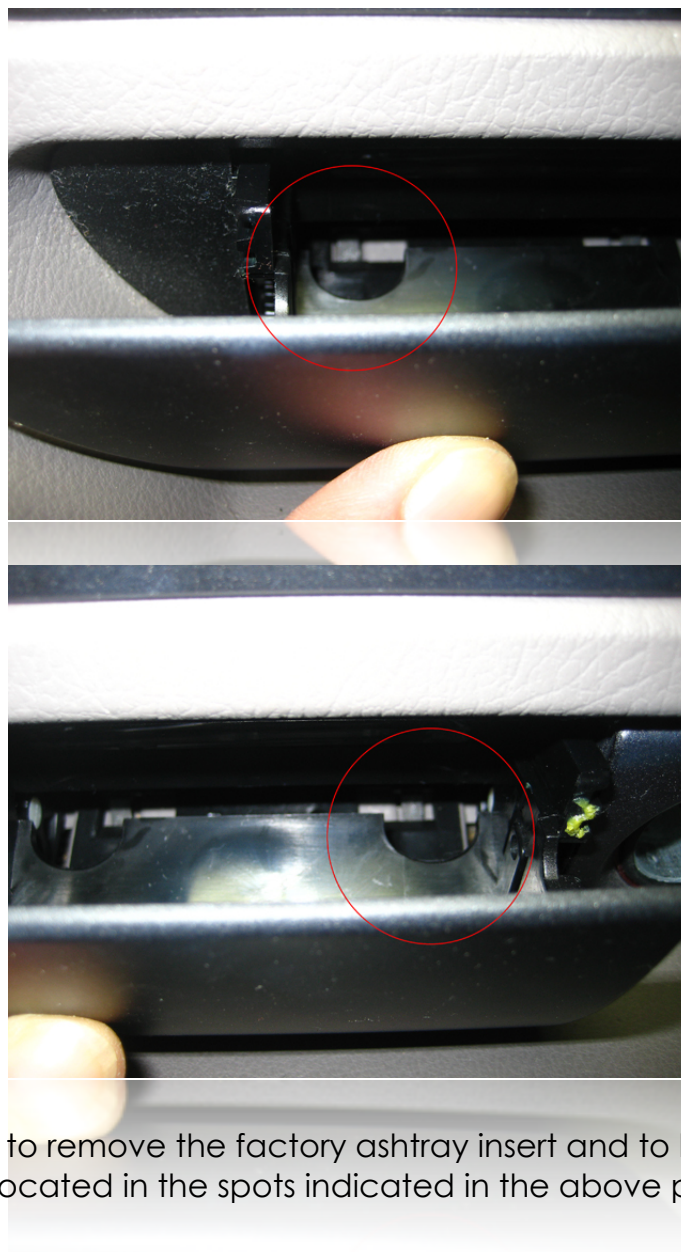




Thank you for your purchase of a spec.dock iPod solution for your vehicle. Audio connections may vary according to your particular setup. For any clarification on your particular vehicle, please email [info@2point5.com](mailto:info@2point5.com) or call 770-414-6038 with any further questions.

## spec.dock Audi B5 v2 Installation Instructions



Your first step will be to remove the factory ashtray insert and to locate the two spring clips located in the spots indicated in the above photos.



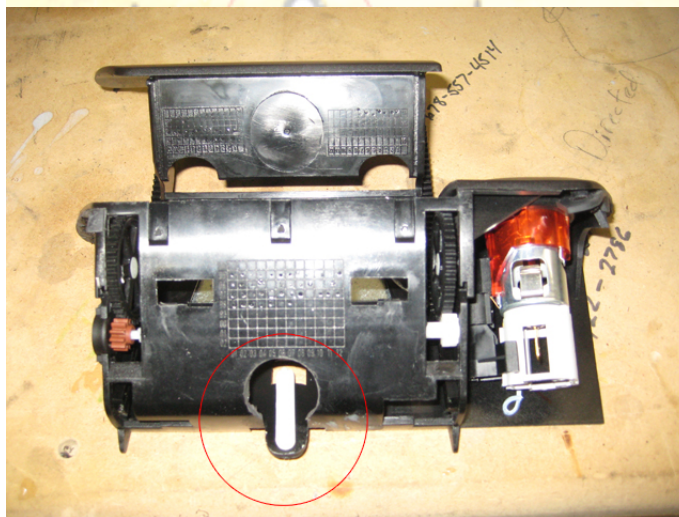
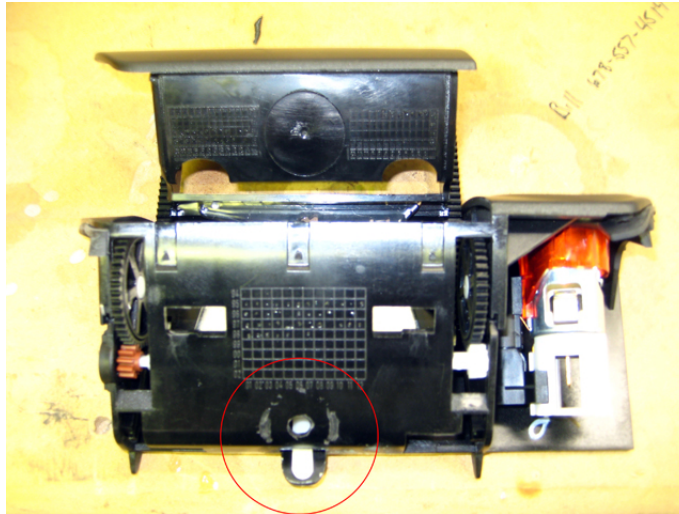
Use a small flathead screwdriver to depress these clips as shown while gently pulling toward you on the ashtray drawer itself to unclip the assembly from the dash. It is usually best to unclip one side at a time.



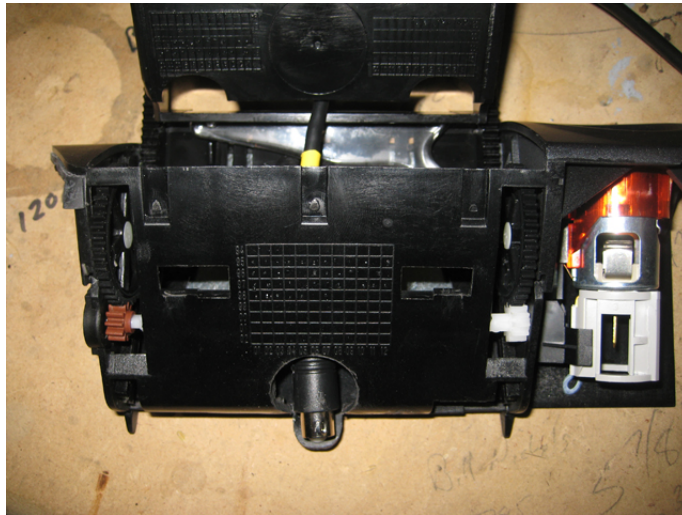
You can then slide the ashtray drawer and housing out of the dash.



There is one electrical connection to this piece at the cigarette lighter. Unplug this connector and remove the ashtray assembly from the vehicle.



Using a hole saw or Unibit, cut a 3/4" hole in the exact location shown, taking care not to damage the ashtray drawer locking mechanism, which is the white lever seen in this photo.



Thoroughly clean the inside of the ashtray housing with a high-quality degreaser such as denatured alcohol, and then route the integrated cable from the spec.dock through the hole you just created. You can then remove the backing from the double-sided tape on the back of the spec.dock and press it firmly into place. You are now ready to reinstall the ashtray housing with the installed spec.dock back into the car.



Route the spec.dock cable through the hole in the vehicle console shown above. This is very important, as it will ensure proper operation of the ashtray drawer.



Pull the spec.dock cable up through the radio opening, and pull the cable slack into the radio opening as you slide the ashtray housing into place. Make sure not to pull the cable too taut, as there needs to be a small amount of slack to allow the ashtray drawer to slide in and out.

Installation of the spec.dock is now complete. Make sure to test for proper functionality of the ashtray drawer and locking mechanism before finishing up the rest of the installation. Refer to the instructions included with your interface product for connection to the vehicle radio and power connections. Be sure to test everything before completely reassembling the vehicle.