



Thank you for your purchase of a spec.dock iPod solution for your vehicle. Audio connections may vary according to your particular setup. For any clarification on your particular vehicle, please email info@2point5.com or call 770-414-6038 with any further questions.

spec.dock BMW e38 v.2 Installation Instructions



Begin by using a panel tool to pry up the leather-wrapped panel located at the back of the center console underneath the sliding armrest. The armrest will need to be slid forward completely to remove this panel. The clips that hold this panel in place are very brittle, so be as gentle as possible. Set this panel aside.





You will see two large Philips-head screws that are revealed with this panel out of the way. Remove these and set aside.



Push forward on the armrest to slide it out of the retainer. You will be able to easily lift it up and away from the console. Set aside.



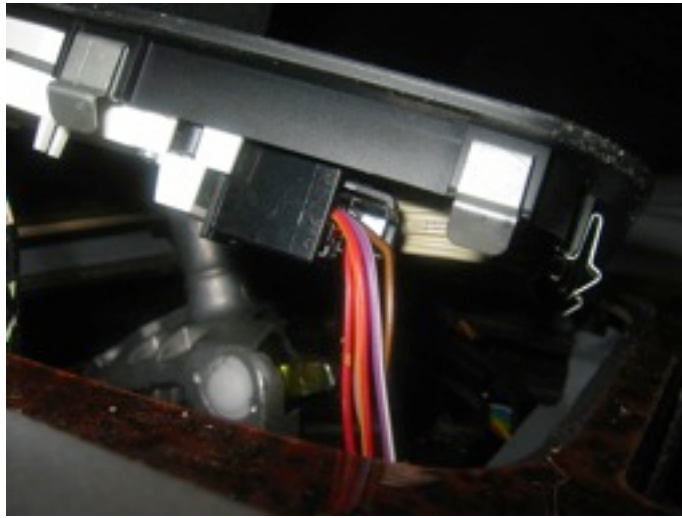
Removing the armrest reveals two brass screws that hold the top of the center-console woodgrain trim in place. Remove these.



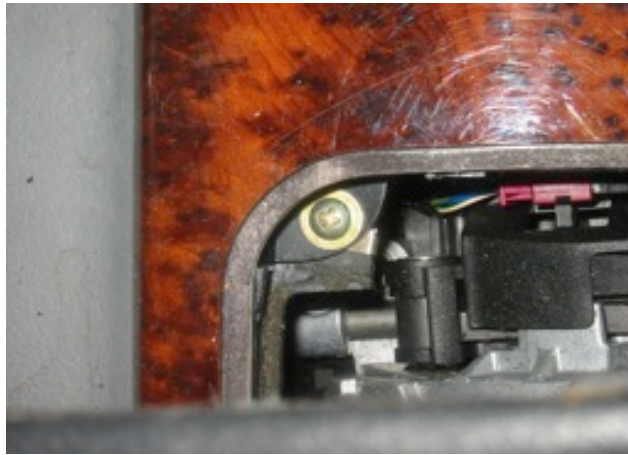
Using only your fingers, unsnap the leather shift boot as shown.



Again using only your fingers, unsnap the plastic trim around the shifter as a shown.



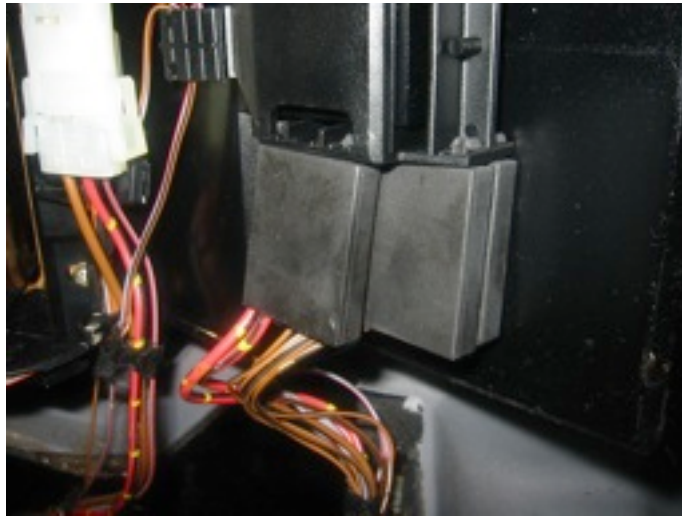
There are three plugs connected to the shifter trim that need to be unplugged so that the piece can be completely removed. Once these are disconnected, fully remove the shifter trim and set aside.



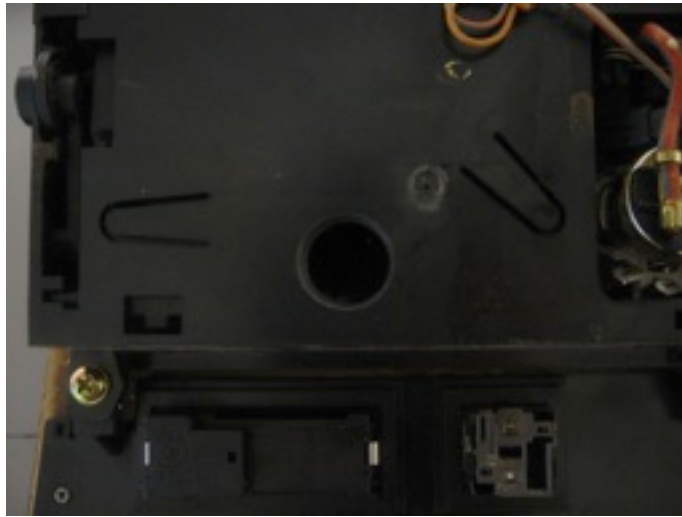
Under the shifter trim, you will find two more brass Philips-head screws that need to be removed.



You will now be able to lift the woodgrain trim up and forward to begin removing it from the console.



There are three sets of connectors plugged into the bottom of this trim piece. Unplug all of these so that the piece can be completely removed from the vehicle.



Place the center console trim upside-down on a well-lit work surface. **Make sure that the ashtray door is closed before proceeding.** You will be drilling a 1/2" hole in the bottom of the ashtray carrier in the precise location shown. Once drilled, you can flip the console piece over and open the ashtray door.



This is what the hole you just drilled should look like from the top. Make sure to clean any plastic debris out of the ashtray carrier before repeatedly opening and closing the door to avoid any problems with the mechanism.



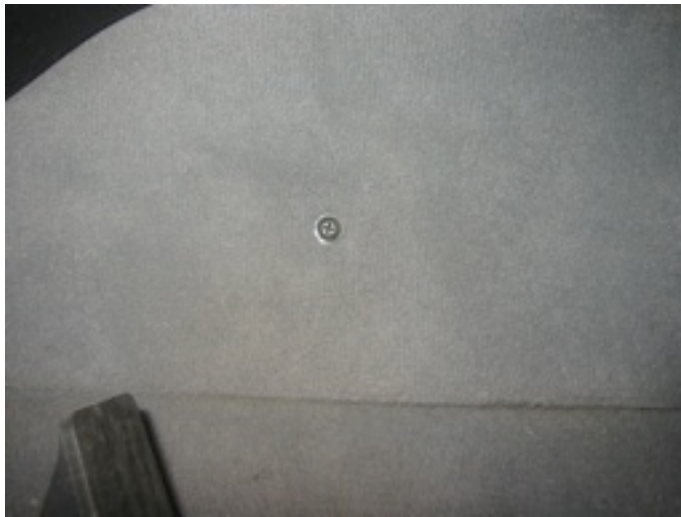
Before the spec.dock is installed, the factory ashtray spring will need to be removed as well. This is accomplished by drilling the head out of the rivet that holds this spring in place. Once the head is drilled out, the spring will be easily removed.



You can now route the spec.dock's wiring through the hole you just cut.



Remove the backing from the included double-sided tape on the bottom of the spec.dock. **Before dropping the spec.dock into place, make sure to clean the ashtray carrier thoroughly with a high-quality degreaser such as denatured alcohol.** This will promote proper adhesion of the tape. Make sure to press down firmly on the spec.dock for a few seconds once it is in position.



Returning to the vehicle, you will want to remove the single Philips-head screw located in the left side of the center console next to the gas pedal.



Now, using only your hands, pull the front of this panel out slightly while sliding it toward the front of the car to release the clips that hold the console side panel trim in place.



Route the wiring from the spec.dock through this spot in the side of the center console and connect to your interface electronics according to the instructions included.

Make sure to test all functionality before completely reassembling the vehicle.

Reassembly is the reverse of disassembly.