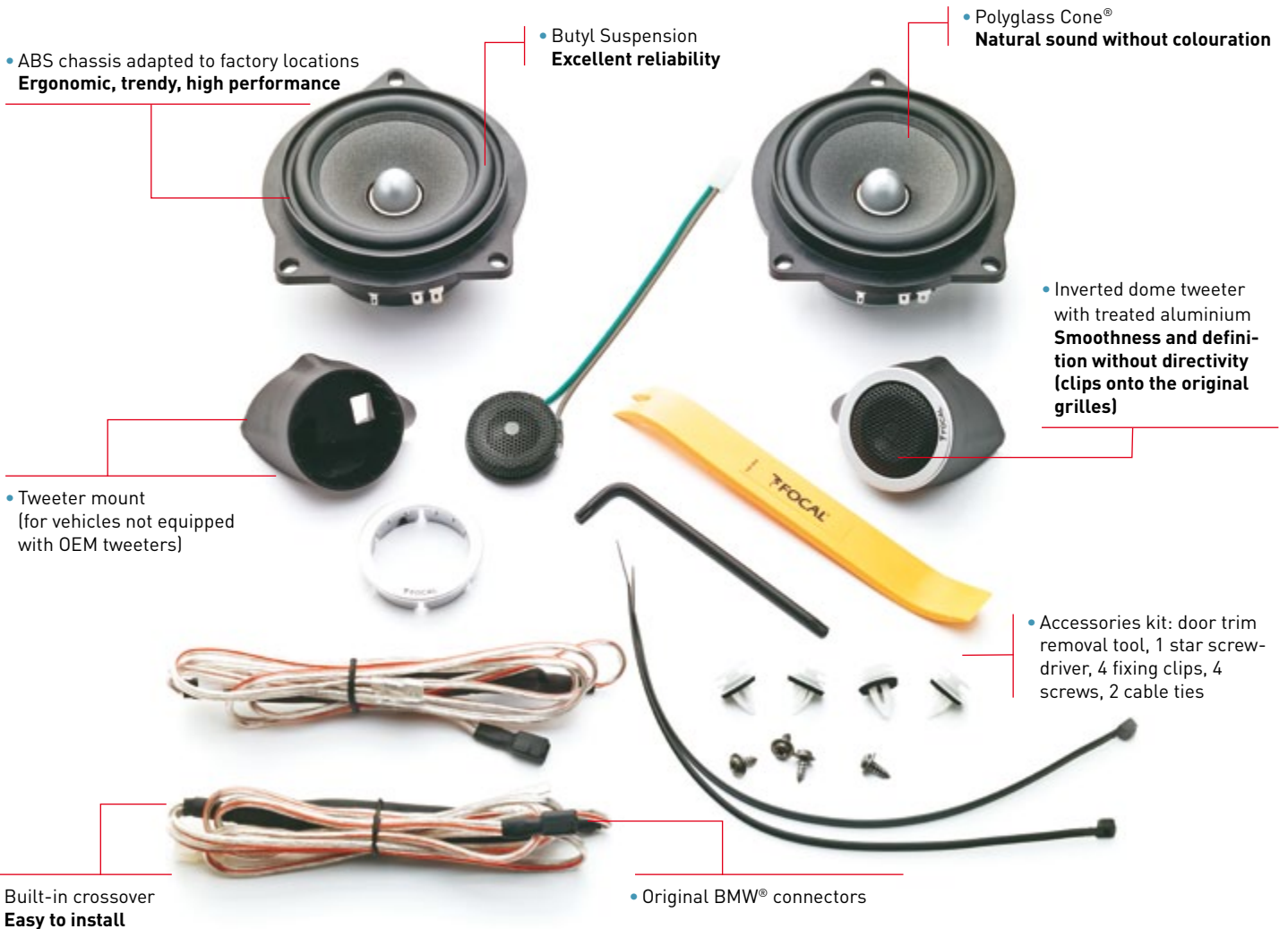


PLUG&PLAY IFBMW-S

2-way component kit



KEY POINTS

- 100% plug and play (original connectors)
- Compatible with 1 Series, 3 Series and X1
- Quick installation
- Improving systems not equipped with tweeters
- Significant results even without changing the OEM system
- Scalability in case of amplification or replacement of the head unit
- Complete pack (tools and clips supplied)
- Installation video tutorial (ref. QRcode)



TECHNICAL SPECIFICATIONS

Woofers: 3^{15/16}" (100mm)
Voice coil diameter: 1" (25mm)
Voice coil height: 0^{7/16}" (11mm)
Magnet: 2^{13/16}" (72mm)

Aluminium/magnesium inverted dome tweeter
Crossover: 18 dB/oct (4 kHz)
Max. power: 80W

Rms. power: 40W
Sensitivity (2.83V/1m): 90.5dB
Frequency response: 85Hz - 22kHz
Nominal impedance: 4Ω

