



Installation Instructions

Complete set active sound incl. sound booster
v1.0 (11.08.2020)

Contents

1	Liability Exclusion	3
2	Copyright	4
3	General notes	4
4	Safety Instructions	5
5	Requirements for the intended use	5
6	Note	5
7	How to connect a cable to another	6
8	Note Cable Inscription/Color	7
9	Assembly Instructions	8
10	Assembly Note	9
11	Disassembly coverings passenger's side	10
12	Disassembly glove compartment	11
13	Disassembly back seat	12
14	Disassembly trunk covering	13
15	Disassembly underbody covering	14
16	Assembly sound generator	15
17	Cable routing & Connection	16
18	Assembly / cable routing button	19
19	Important Information Sound Booster	20
20	Configuration	20
21	Software	21
22	Software	22
23	Software	23
24	LED Status Display / Troubleshooting	24

1 Liability Exclusion

Dear Customer,

Our cable sets are developed according to the connection- and circuit diagrams of the corresponding car manufacturers. Before the serial production, the cable sets will be adjusted and tested on an original vehicle. Therefore, the integration into the vehicle electronics follows the guidelines provided by the car manufacturer. Our installation instructions correspond to what is common in the vehicle electric/electronic regarding the required pre-understanding and the accuracy of the description in text and picture. They have proven its worth in practice hundreds of times.

If you should experience any difficulties while installing one of our products, we are available to provide support via phone or email. Additionally, we offer you to execute the installation in our workshop in Bad Segeberg.

Costs, arising from third parties assigned with the installation of our products, are not being covered by us. We will only compensate the proven costs of the assembly and the costs of the disassembly of the defective product, if it turns out that there is an issue with our product. We limit the reimbursement of costs up to 110 Euro gross and reserve the right to verify the claim in our workshop in Bad Segeberg. The costs for shipping will be refunded if the claim is justified.

We made the experience, that every professional workshop that is equipped with the necessary diagnostic devices, the diagnostic software and the manufacturer's circuit diagrams, is able to find any possible defects in one of our products in a short period of time. The assembly and disassembly including troubleshooting the issue should therefore only take up to 60 minutes.

We also made the experience, that many professional workshops are not able to cope with the manufacturer's circuit diagrams and can't read common wiring schemes, which results in the calculation of several hours for the simplest installations. You will understand the fact, that we can neither take the risk of finding a reliable workshop for you, nor can we finance the training of the employees of your trusted workshop.

Costs, arising from purchasing missing parts or replacements for defective parts from other suppliers, are covered by us up to the amount that the subsequent delivery would have caused (saved expenses). According to the legal warranty law, there would be no reimbursement right, if there was no deadline for the subsequent fulfilling set or the deadline for a subsequent fulfilling hasn't expired.

That being said, if you have any problems during the installation or operation of one of our products call us, write us an email, send us the product or come by our workshop in Bad Segeberg with your vehicle. We are certain, that we can find a solution for any kind of concern.

Kind regards,

Your Kufatec GmbH & Co. KG Team

2 Copyright

Our installation and operation instructions, installation plans, software and other written and/or pictured documentations are protected by copyright.

The publication or distribution of these documentations is only permitted with a written approval of Kufatec GmbH & Co. KG.

3 General notes

While developing this product, your personal safety combined with the best operating service, modern design and an up-to-date production technique was especially taken into account.

Unfortunately, despite the utmost care injuries and/or damages might occur due to improper installation and/or use.

Therefore, please read the following instruction manual fully and thoroughly and keep it!

All articles of our production line pass through a 100% check – for your safety and security.

We reserve the right to carry out technical changes which serve the improvement at any time.

Depending on each product and purpose, it might be necessary to check each country's legal regulations before installing and starting it.

In case of warranty claims, the product has to be sent back to the seller in the original packaging with the attached bill of purchase and detailed defect's description. Please, pay attention to the manufacturers return requirements (RMA). The legal warranty directions are valid.

The warranty claim as well as the operating permission becomes invalid due to:

- unauthorized changes to the device or accessories which have not been approved or carried out by the manufacturer or its partners
- opening the casing of the device
- repairing the device on one's own
- improper use/operation
- brute force to the device (drop, willful damage, accident etc.)

During the installation, please pay attention to all safety relevant and legal directions. The device should only be installed by trained personnel or similarly qualified people.

In case of installation problems or problems concerning the functionality of the device, limit the time to approx. 0,5 hours for mechanical or 1,0 hours for electrical troubleshooting.

To avoid unnecessary costs and time-loss, send in an immediate support-request, via the Kufatec-contact-form (<http://www.kufatec.de/shop/de/infocenter/>).

In case of, let us know the following:

- Car chassis number/vehicle identification number
- Five-digit part number of the device
- Exact description of the problem
- Steps you have taken to solve the problem

4 Safety Instructions

The installation should only be performed by trained personnel. Only perform installations while in a voltage-free state. For example, disconnect the battery. Please pay attention to the instructions provided by the manufacturer.

- Never use bolts or nuts from the car's safety devices for installation. If bolts or nuts from the steering wheel, brakes or other safety devices are used for installation of the device, it may cause an accident.
- Use the device with a DC 12V negative ground car. This device cannot be used in large trucks which use a DC 24V battery. If it is used with a DC 24V battery, it may cause a fire or accident.
- Avoid installing the device in places that would restrict you from driving safe or where it could damage the car's other fittings.
- This device should only be used in combination with the mentioned vehicles. Only connections described within this instructions guide are allowed or required to use for installation.
- For damages caused by faulty installation, unsuitable connections or inappropriate vehicles, Kufatec GmbH & Co. KG assumes no liability.
- We advise you that these devices process data from the MOST – protocol of the vehicle. As the supplier of this device we don't know the overall system you are working with. If your device causes damage, due to other changes made to the vehicle, Kufatec GmbH & Co. KG assumes no liability.
- Kufatec GmbH & Co. KG supplier does not guarantee the use of the product for changes within a new vehicle series.
- If the car manufacturers don't agree with the installation of our device by reason of warranty, Kufatec GmbH & Co. KG assumes no liability. Please, check conditions and warranty before you begin the installation.
- Kufatec GmbH & Co. KG reserves the right to change the device specifications without notice.
- Subject to errors and changes.

5 Requirements for the intended use

Only use this device in its intended area.

In case of unprofessional installation, improper use or modification, the permission for the operation and the warranty claim will expire.

6 Note

Make sure that there's enough space at the described position. If there is no space please cancel the installation and contact our technical support.

The use of a sound booster is not permitted without registration in the vehicle papers, in the area of the german StVZO. The noise emission of the vehicle is increased by this retrofit. The regulations of the StVZO must be observed. It is therefore recommended to ask for a specific registration option at the responsible TÜV/DEKRA office before retrofitting. Outside Germany, please observe the laws on vehicle licensing applicable in your country.

7 How to connect a cable to another

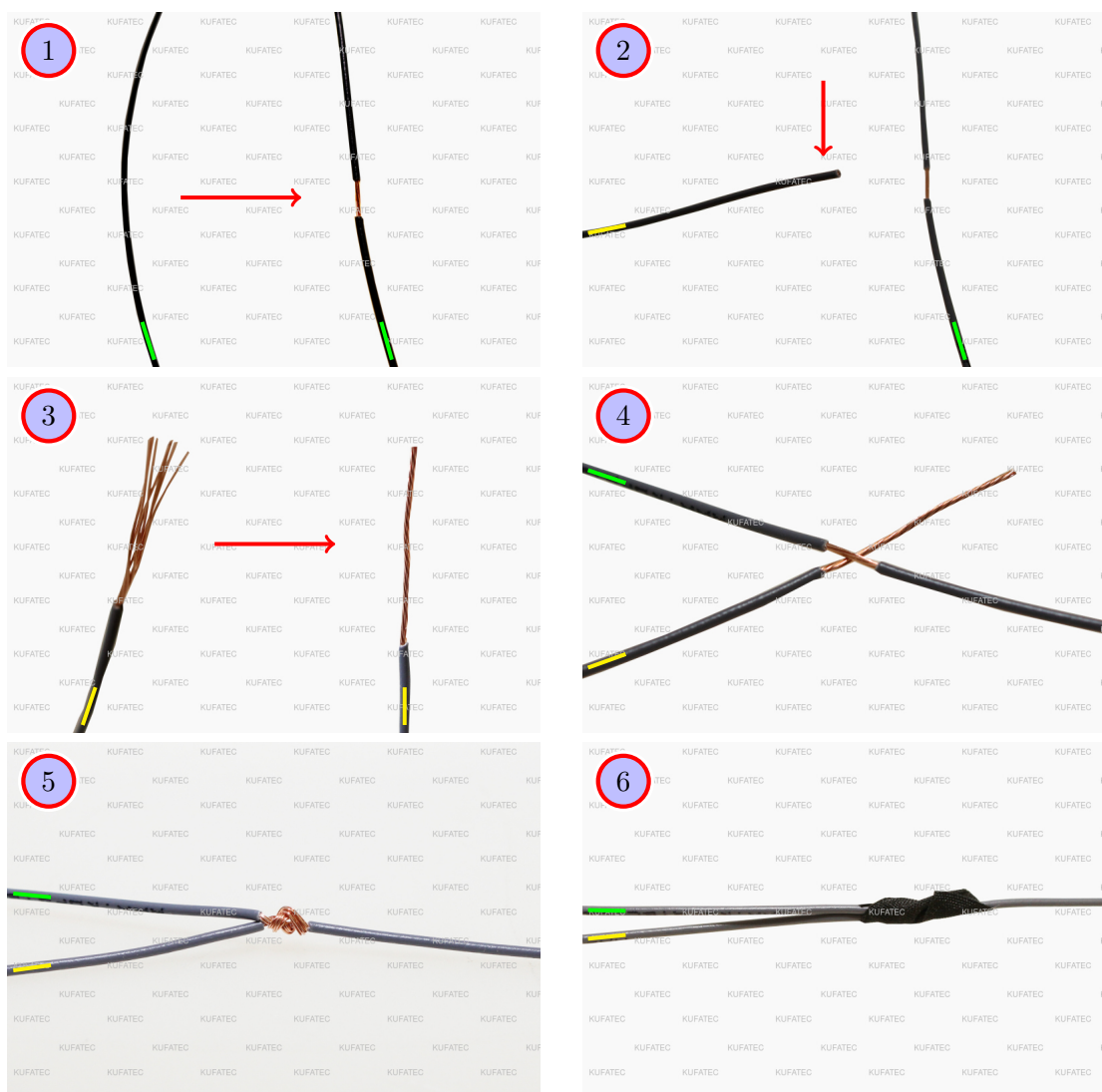


Figure 1: How to connect a cable to another

Table 1: How to connect a cable to another

No.	Work step	Note
1	Take the cable of the vehicle, to which you want to connect, (green marked here) and strip the insulation at one point with a suitable tool (cable stripper/cutter knife).	
2	Now take the cable of the cable set, which you want to connect, (yellow marked here) and strip the insulation at the end.	
3	Twirl the wires of the stripped cable together.	
4	Place the end of the cable you want to connect under the stripped point of the cable of the vehicle...	
5	... and wrap the cable you want to connect around the cable of the vehicle.	
6	Lastly, stick insulating tape around the connection point. Make sure that the isolation is put onto the connection professionally to prevent corrosion.	

8 Note Cable Inscription/Color

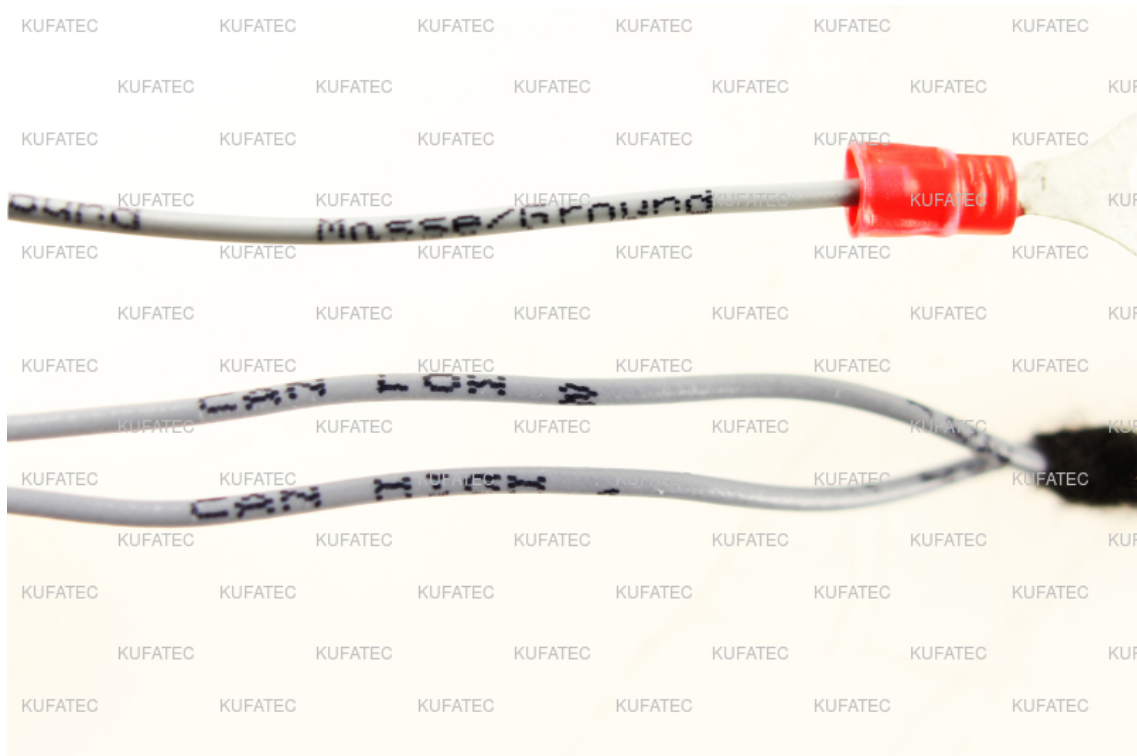


Figure 2: Cable Inscription

If the cable set consists of colored cables, connect the cables according to the color. If all cables of the cable set have the same color, connect the cables according to the cable inscription.

9 Assembly Instructions

The following illustration shows the cable routing as well as the position of the individual components.

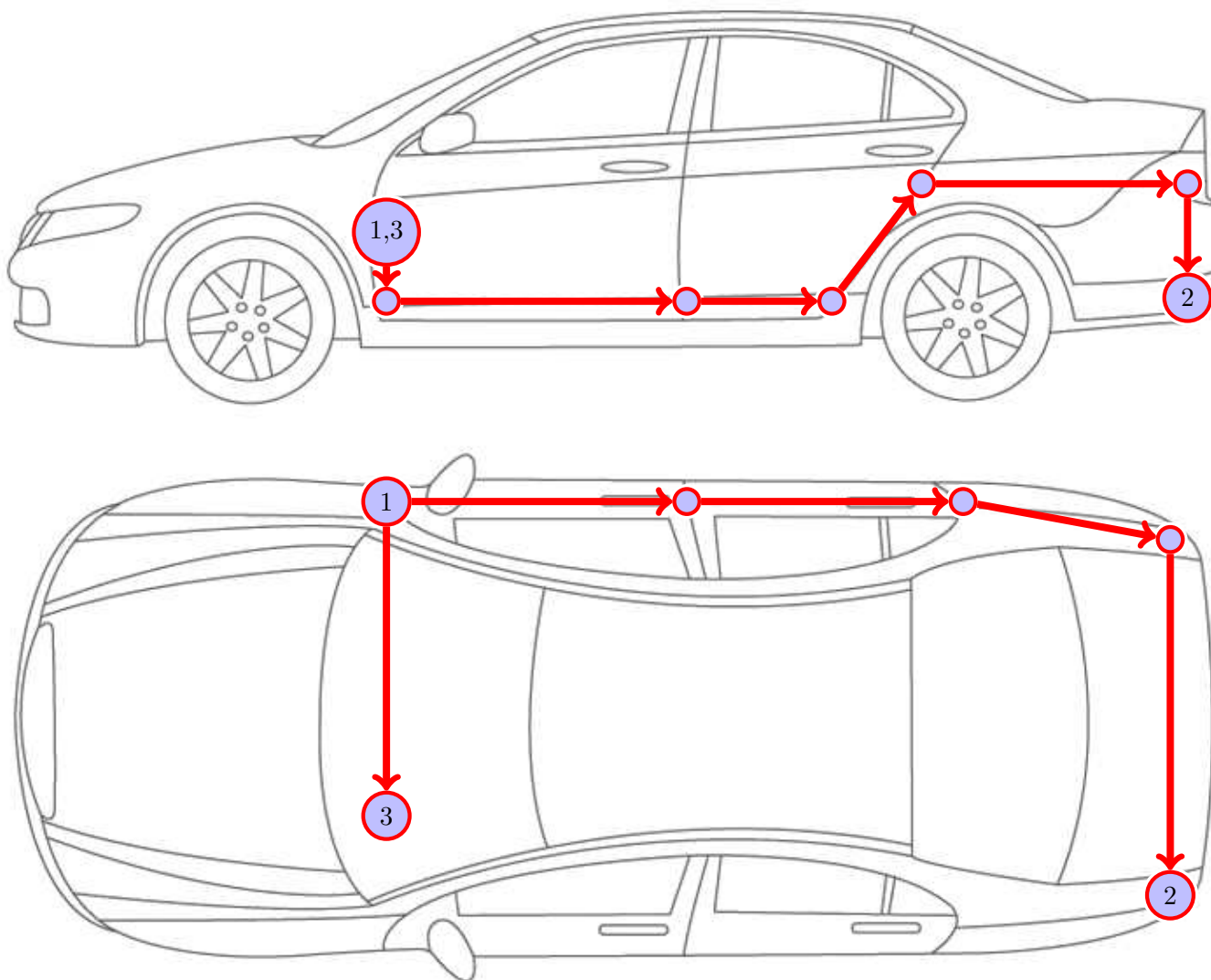


Figure 3: Vehicle overview

- 1 Connection cable set / control unit
- 2 Sound generator
- 3 Button (optional)

Please be aware, that this overview is only for **illustration purposes**. Always lay the cable set in the **most convenient and shortest way** possible. For a detailed description of the cable routing, please refer to the relevant sections of the following manual.

10 Assembly Note

Important note for the assembly

- The vehicle used for the assembly instruction was a **Mini F56 Electric**. We would like to point out, that the disassembly of the individual parts can vary depending on the type of vehicle. Please make sure to keep that in mind.

Notes for assembling the vehicle

- Before you start assembling the vehicle, the system must first be tested for proper function.

11 Disassembly coverings passenger's side

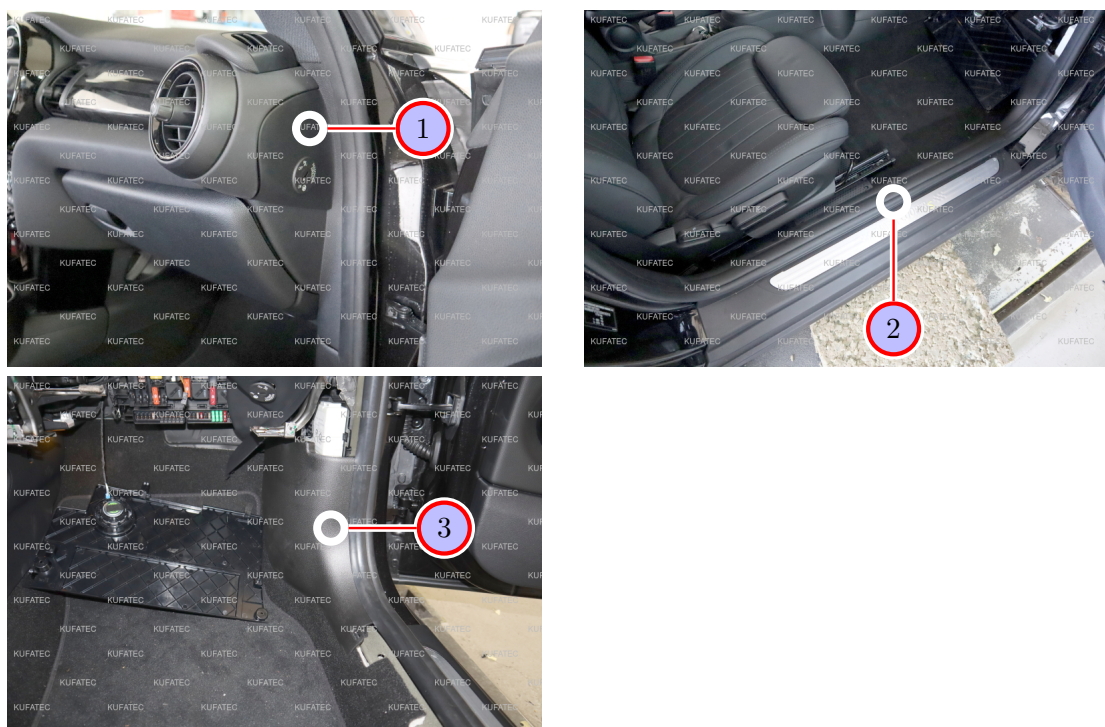


Figure 4: Disassembly coverings passenger's side

Table 2: Instructions to disassemble the coverings on the passenger's side

No.	Work step	Note
1	Loosen the lateral dashboard covering by using an assembly lever.	
2	Loosen the sill trim by using an assembly lever.	
3	Remove the lower A-column covering.	

12 Disassembly glove compartment

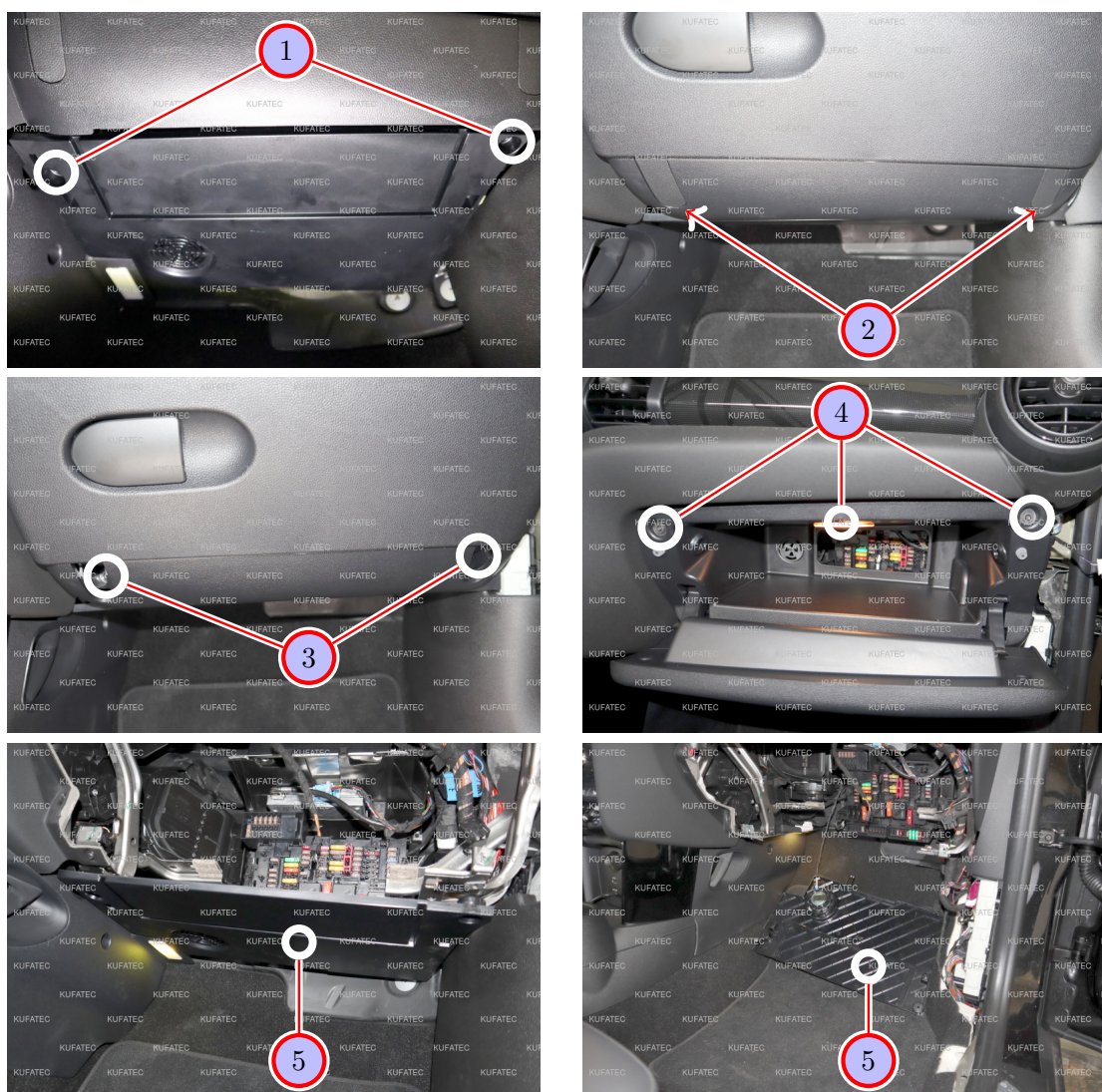


Figure 5: Disassembly glove compartment

Table 3: Instructions to disassemble the glove compartment

No.	Work step	Note
1	Loosen and remove the two marked screws under the glove compartment.	2xT20
2	Remove the marked covering.	
3	Loosen and remove the two screws, which are located behind the previously removed covering.	2xT20
4	Open the glove compartment and loosen and remove the three marked screws at the top.	3xT20
	Remove the glove compartment completely.	
5	Remove the covering under the glove compartment. Pay attention to the lighting.	

13 Disassembly back seat



Figure 6: Disassembly back seat

Table 4: Instructions to disassemble the back seat

No.	Work step	Note
1	Pull the back seat in the front upwards until it detaches from the clips.	
2	Subsequently the back seat can be removed from the vehicle completely.	

14 Disassembly trunk covering

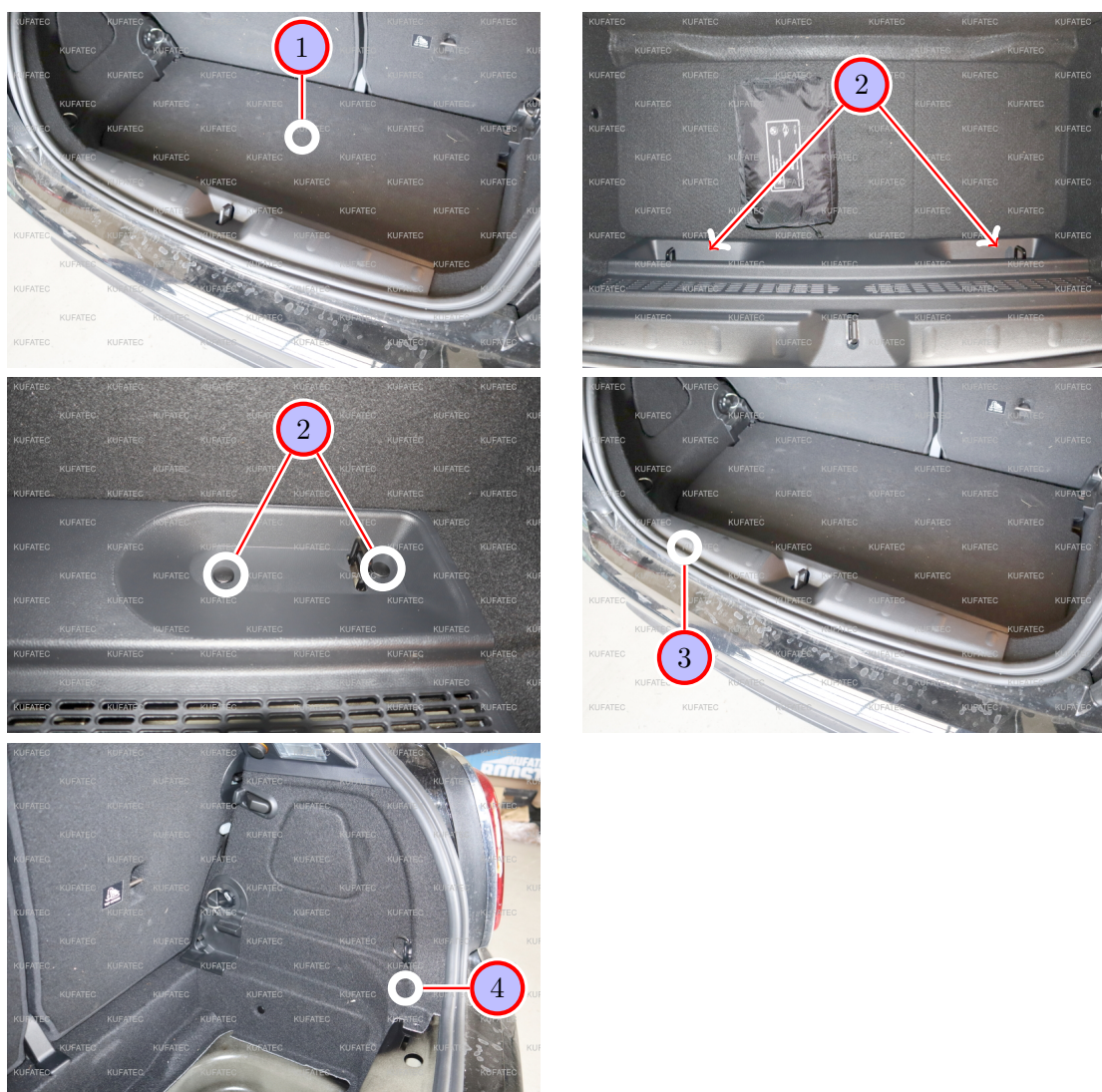


Figure 7: Disassembly trunk covering

Table 5: Instructions to disassemble the coverings in the trunk

No.	Work step	Note
1	Remove the trunk floor.	
2	Loosen the four clips in the trunk at the load sill guard.	
3	Remove the load sill guard subsequently.	
4	Loosen the side covering enough so that you can route the cable set behind it.	

15 Disassembly underbody covering

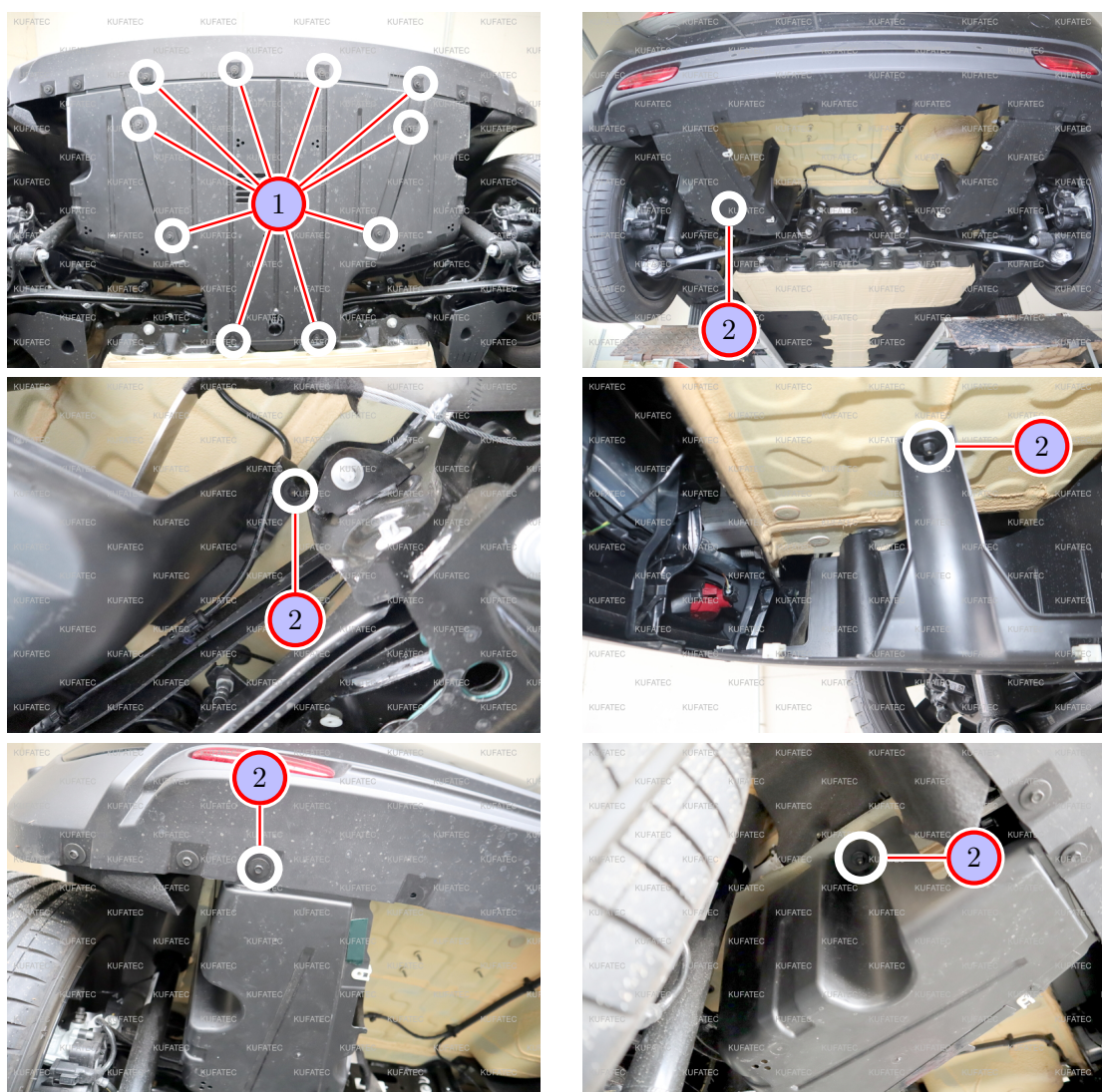


Figure 8: Disassembly underbody covering

Table 6: Instructions to disassemble the underbody covering

No.	Work step	Note
1	Loosen and remove the ten marked screws at the covering and remove it subsequently.	10xSW8
2	Loosen and remove the four screws at the covering on the driver's side as well.	3xSW10 1xSW8
	Remove the covering subsequently. The sound generator is assembled here.	

16 Assembly sound generator

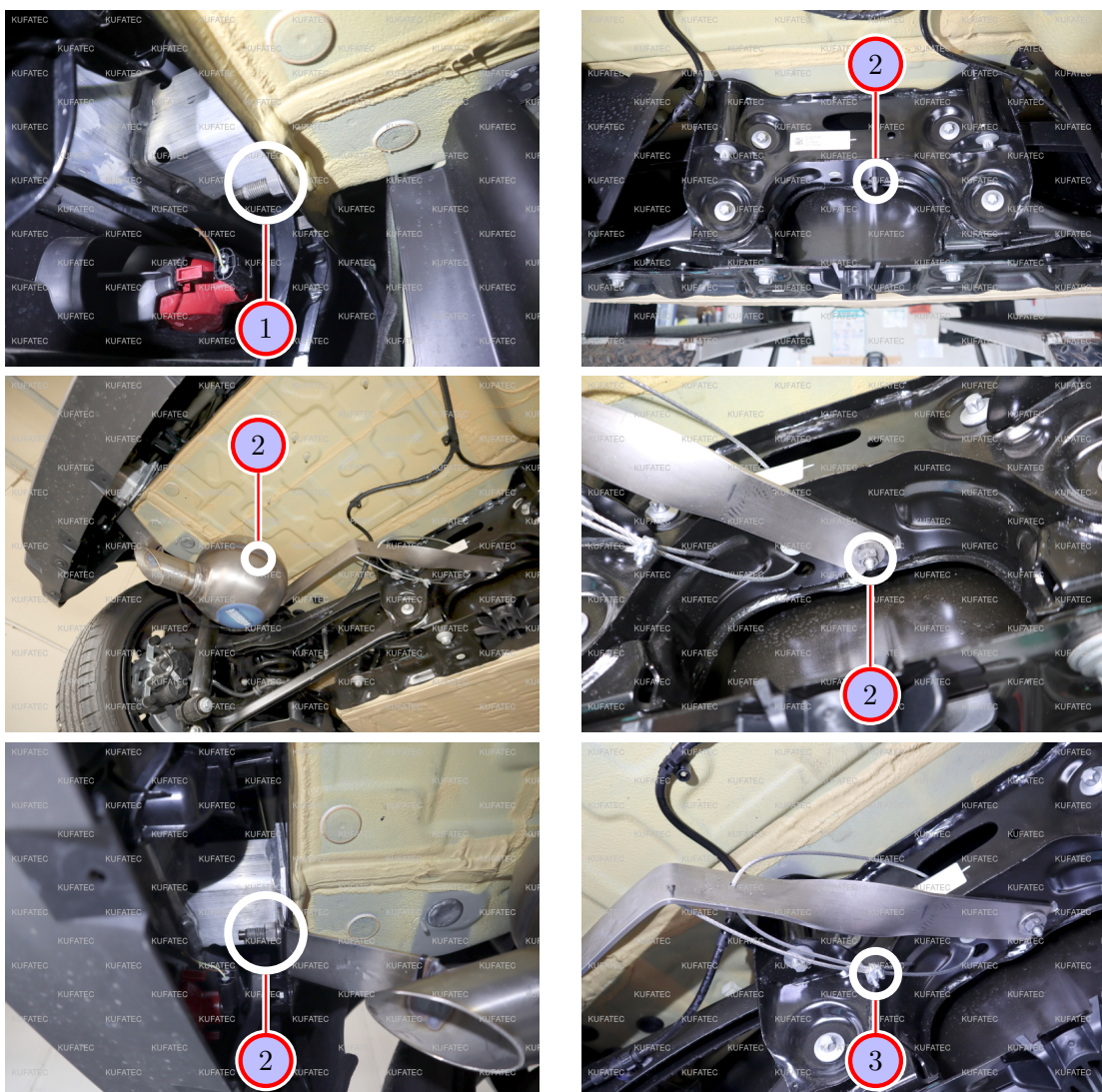


Figure 9: Assembly sound generator

Table 7: Instructions to disassemble the sound generator

No.	Work step	Note
1	Loosen and remove the marked screw at the impact absorber. It will be used again to assemble the sound generator.	1xSW18
2	Attach the sound generator to the position of the previously removed screw at the impact absorber as well as in the back at the back axle (screw not included in scope of delivery).	
3	Secure the sound generator with the wire rope.	

17 Cable routing & Connection

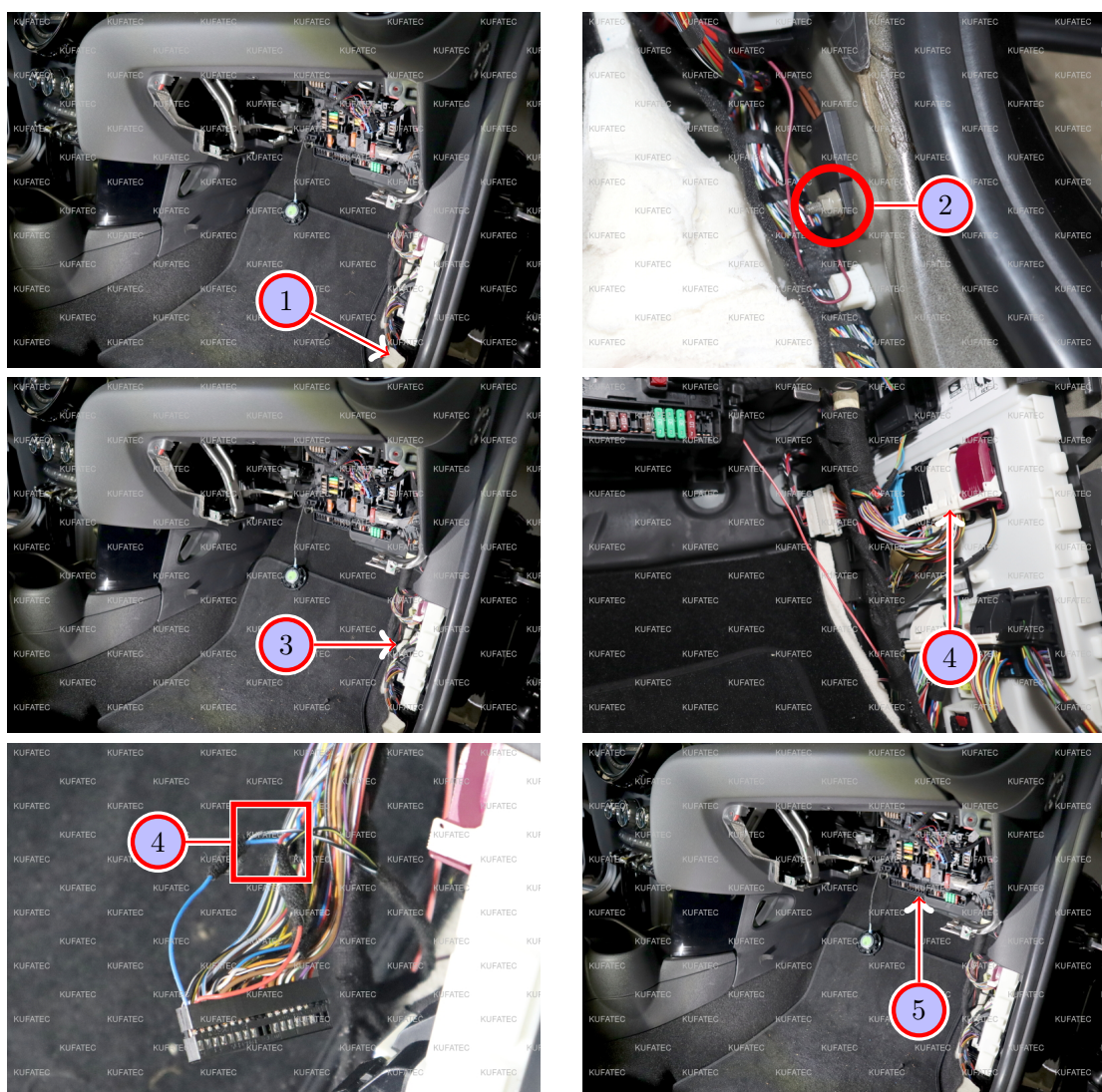


Figure 10: Cable routing & Connection

Table 8: Instructions to route & connect the cable

No.	Work step	Note
	The cable set is connected in the passenger's footwell to the modules as well as to cables power, ground and CAN.	
1	Route the cable for ground to the ground pin . It is located at the sill trim / A-column.	
2	Connect the ground cable to the marked ground pin.	
3	Route the cables for CAN to the marked plug (white cap, black plug) at the A-column.	
4	Loosen the plug, remove the cover cap and connect CAN as follows: CAN High to blue cable in Pin 36 CAN Low to red cable in Pin 35	
5	Route the cable for power supply up to the fuse box .	

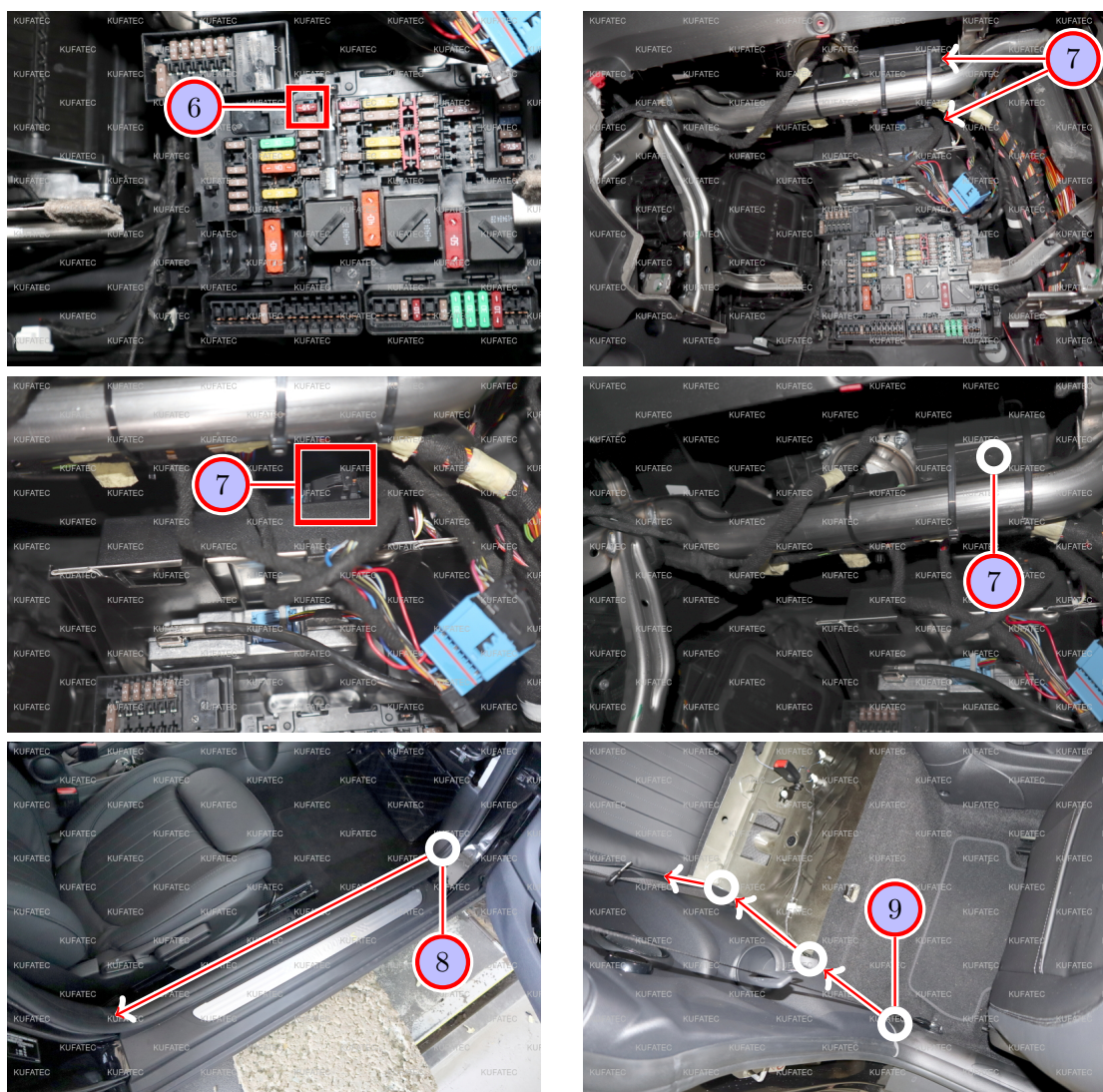


Figure 11: Cable routing & Connection

Table 9: Instructions to route & connect the cable

No.	Work step	Note
6	Use a multimeter to look for a ignition plus carrying slot (we used the slot F49). Pin the cable for ignition plus to the slot and secure it with a 10A fuse .	
7	Connect the plug (18-pole/8-pole) to the sound module as well as the Bluetooth module and store it at a suitable position in the dashboard.	
	The long cable with the 2-pole plug now has to be routed to the back to the sound generator.	
8	Route the cable from the passenger's footwell under the sill trim back to the back seat.	
9	Route the cable behind the side covering of the back seat back into the trunk. Use a pulling tool.	

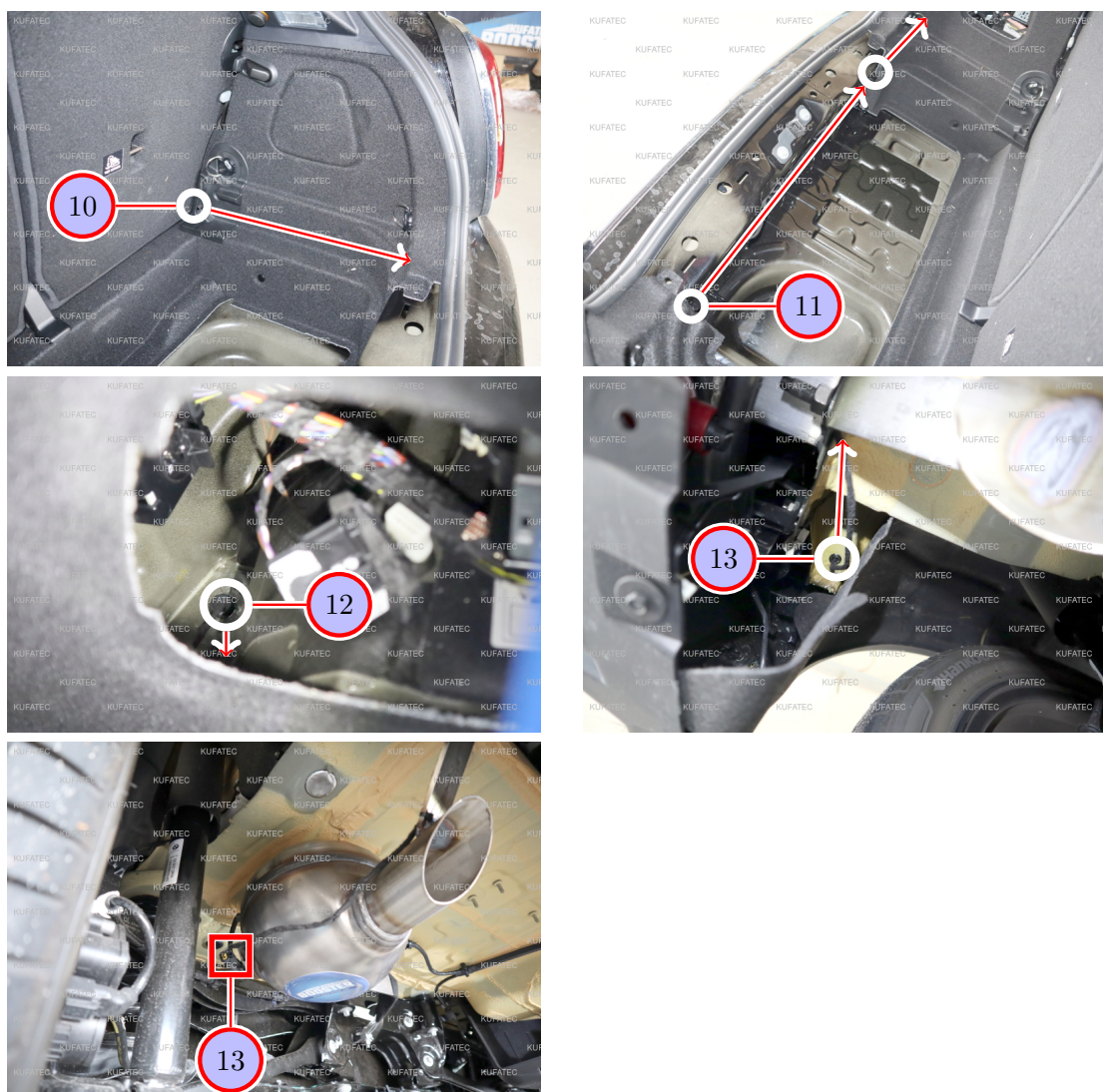


Figure 12: Cable routing & Connection

Table 10: Instructions to route & connect the cable

No.	Work step	Note
10	Pull the cable behind the side covering on the passenger's side to the load sill guard.	
11	Route the cable under the load sill guard along the original harness behind the side covering on the passenger's side.	
12	Route the cable through the marked rubber grommet behind the side covering down under the vehicle. Use a pulling tool.	
13	Route the cable under the vehicle to the sound generator and connect the plug to the sound generator. Attach the cable professionally using factory materials.	

18 Assembly / cable routing button

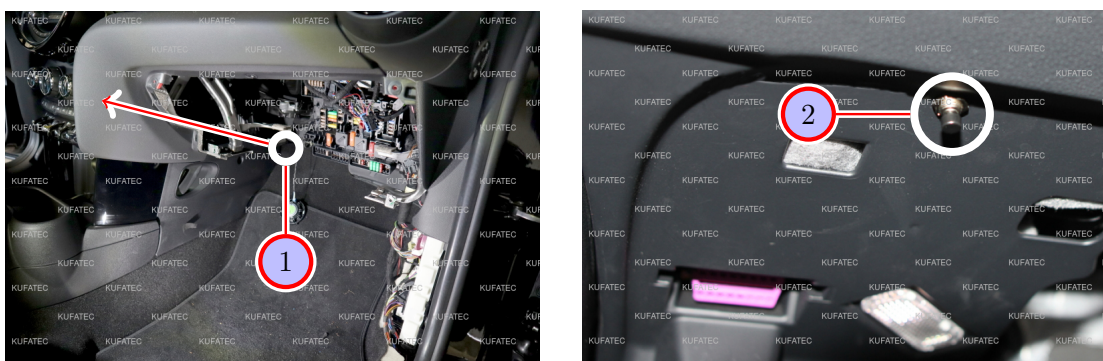


Figure 13: Assembly / cable routing button

Table 11: Instructions to assemble / route the cables of the button

No.	Work step	Note
!	Note: Only execute this section, if the button cable is supposed to be assembled in the driver's footwell. If that is not wanted, the cable can be tied back in the passenger's footwell and can be stored there.	
1	Route the cable with the push button from the passenger's footwell behind the center console along the front wall into the driver's footwell. Use a pulling tool.	
2	Loosen the lower dashboard covering on the driver's side. Look for a suitable position for the button and drill a 7mm hole into the covering.	
	Insert the button and store the cable professionally.	

19 Important Information Sound Booster

Please use suitable screws that can withstand high loads of impact to attach the sound generator. In order to avoid loosening of the screws due to the vibration, please secure the screws with appropriate factory material e.g. threadlock. Please additionally check the stability of the Sound Booster regularly and if necessary retighten the screws. In case of non-compliance we do not assume liability for possible damages.

After a successful installation we recommend to cover the sound generator with a zinc spray. Make sure that you cover the opening of the sound generator so that the zinc spray can't get inside the sound generator.

As additional safety the delivered steel cable and the retaining clips have to be attached to the Sound Booster as well as at a suitable position to the car. This safety cable is an additional security should the tightening screws be released due to the vibration.

20 Configuration

Configuration

If a Bluetooth enabled module is available, the app „**Kufatec-Link**“ is required for the configuration. The app is available to download for free for IOS as well as for Android.

- For IOS in the Apple Store:

<https://apps.apple.com/app/kufatec-link/id1401203449>



- For Android in the Google Play Store:

<https://play.google.com/store/apps/details?id=com.kufatec.ktcLink>



21 Software

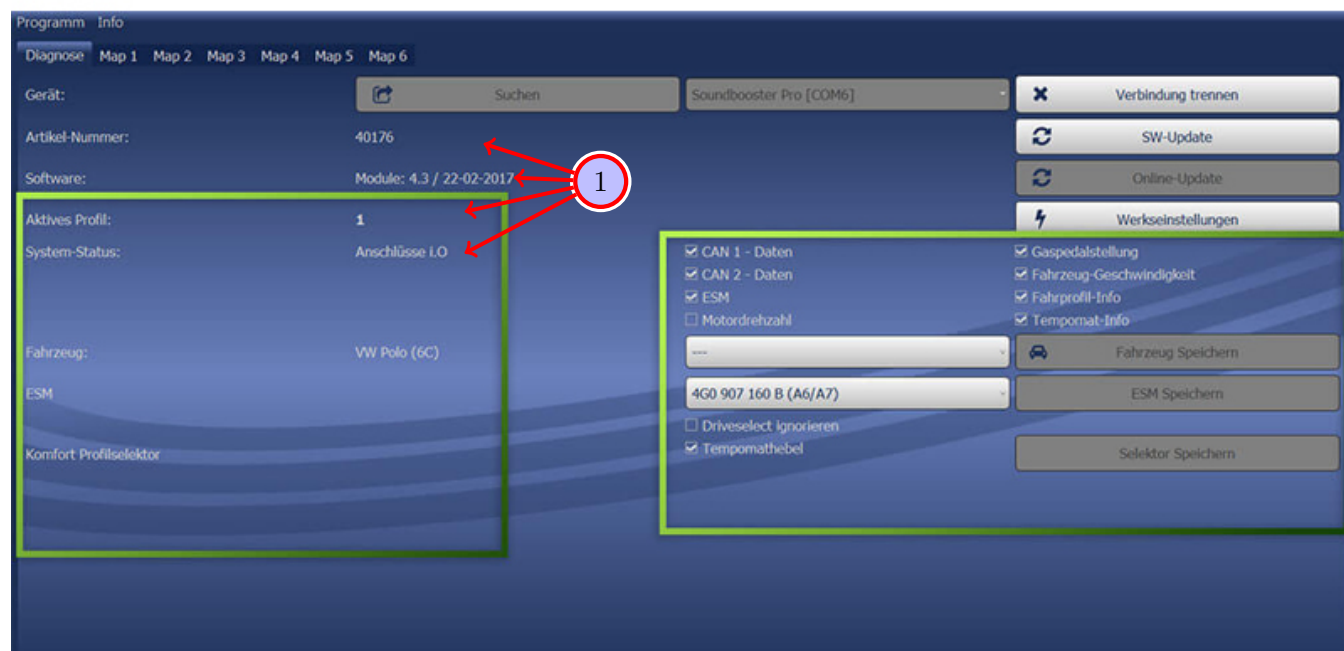


Figure 14: Software

Table 12: Notes for the software

No.	Work step	Note
1	If the system does not work after the installation, please check if the system was installed correctly by having a look on the following link: https://www.sound-booster.com/en/debugging.html . Our Sound Booster Software for PC / Mac should be used for the commissioning or further debugging:	
	Step 1: Download the appropriate software via the following link: https://www.sound-booster.com .	
	Step 2: Turn the ignition of the vehicle on and only then connect the PC / Mac with a USB-cable to our module. It is important to check beforehand if plus and minus are connected correctly. If this is not the case, it could result in a damage to the computer or to the control unit.	
	Step 3: Start the downloaded software and click on search first and then on connect. You will be automatically forwarded to the diagnosis site, on which you can see the following things at a glance:	
	Software: Software version / creation date	
	Active profile: The actually activated profile is indicated here.	
	Vehicle: The automatically identified vehicle is indicated here.	
	System status: Here you can tell, if the connections are correct.	

22 Software

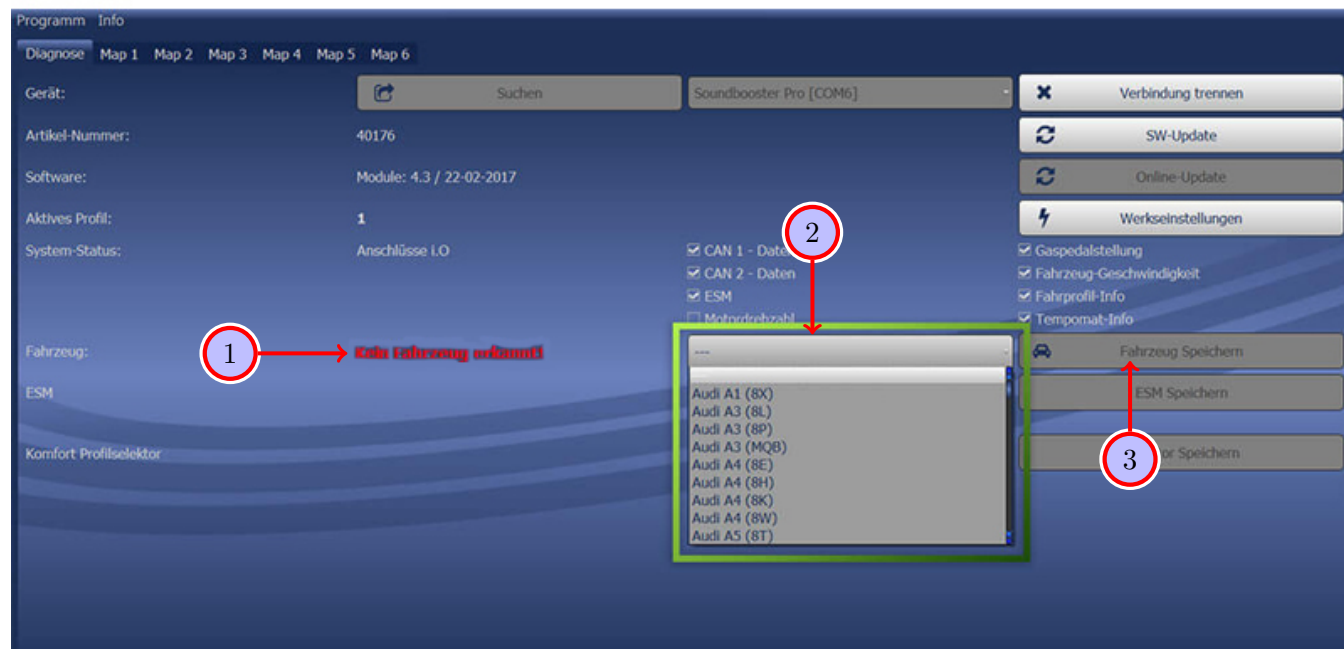


Figure 15: Software

Table 13: Notes for the software

No.	Work step	Note
1	If no current vehicle is identified, you have to select the vehicle via the manual selection as follows:	
2	Open the dropdown-menu, search for your vehicle and select it.	
3	Click on Save Car to permanently save the vehicle to the module.	
	If you don't find your vehicle in the list, it might be necessary that the software has to be adapted to your vehicle. In that case, please contact us via e-mail: info@kufatec.de or by phone: +49 (0) 4551 / 80 810 888. We will make an appointment with you, where we will adapt the software to your vehicle per Team Viewer (remote maintenance).	

23 Software

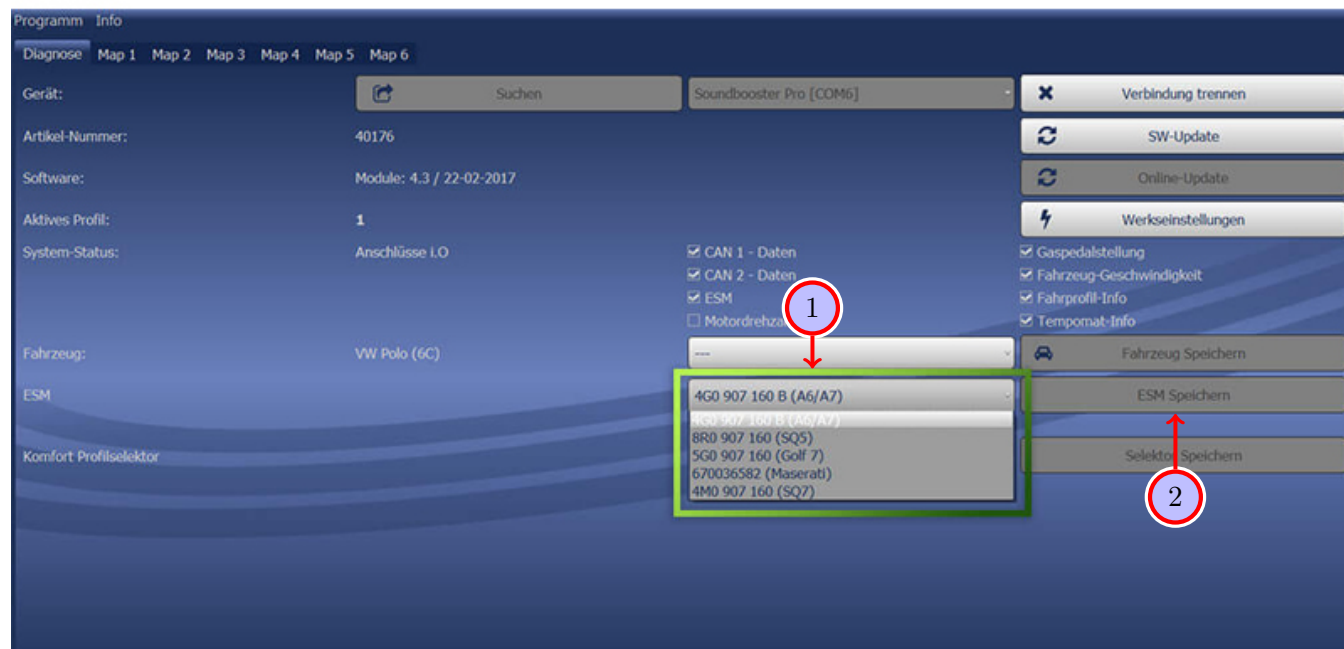


Figure 16: Software

Table 14: Notes for the software

No.	Work step	Note
1	You also need to check if the right ESM is selected in our software: Open the dropdown-menu, search for the correct ESM and select it.	
2	Click on Save ESM to permanently save the ESM to the module.	
3	For example, if you ordered a complete set with a Audi control unit you need to select the ESM 4G0 907 160 B (A6/A7) . If you installed the Maserati control unit instead of the Audi control unit you need to select the ESM 670036582 (Maserati) . If the system does not work after all please get in contact with us via e-mail: info@kufatec.de or by phone: +49 (0) 4551 / 80 810 888. We will check the issue as soon as possible.	

24 LED Status Display / Troubleshooting

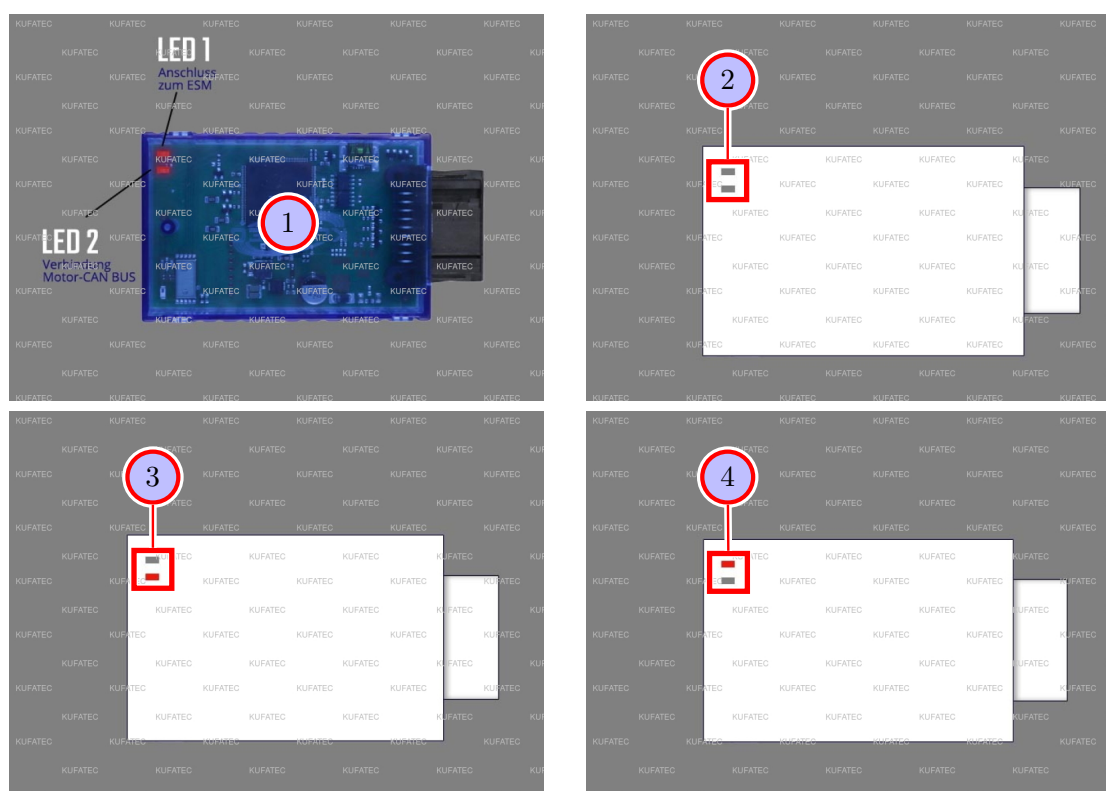


Figure 17: LED Status Display / Troubleshooting

Table 15: Instructions for the LED Status Display / Troubleshooting

No.	Work step	Note
1	If the system has been installed as described, the ignition can be switched on. After switching on the ignition, LED 1 lights up every second and LED 2 flickers very quickly. If this is the case, the system is ready to be used.	
!	First of all check whether the plug connection is connected correctly. The bracket of the plug must be vertical and the plug must be sunk in to the horizontal marking.	
2	If no LED is shining on our module, proceed as follows:	
	Option 1: "Check if the module is connected to a power source.	
	Option 2: Update the firmware via our software.	
	Option 3: Check if the module is connected to the right CAN-Bus (Powertrain-/Motor-CAN).	
	Option 4: The module has been damaged during the installation. In this case, please contact us at the following e-mail address, quoting the invoice number and a brief description of the error: info@kufatec.de.	
3	If LED 1 is not flashing, proceed as follows:	
	Option 1: Check the connection to the ESM (External Sound Module) (error message: connection CAN 2).	
	Option 2: Check if the module is connected to a power source.	
4	If LED 2 is not shining, proceed as follows:	
	Option 1: Check if the module is connected to a power source.	
	Option 2: Check if the module is connected to the right CAN-Bus (Powertrain-/Motor-CAN) (error message: connection CAN 1).	

List of Figures

1	How to connect a cable to another	6
2	Cable Inscription	7
3	Vehicle overview	8
4	Disassembly coverings passenger's side	10
5	Disassembly glove compartment	11
6	Disassembly back seat	12
7	Disassembly trunk covering	13
8	Disassembly underbody covering	14
9	Assembly sound generator	15
10	Cable routing & Connection	16
11	Cable routing & Connection	17
12	Cable routing & Connection	18
13	Assembly / cable routing button	19
14	Software	21
15	Software	22
16	Software	23
17	LED Status Display / Troubleshooting	24

List of Tables

1	How to connect a cable to another	6
2	Instructions to disassemble the coverings on the passenger's side	10
3	Instructions to disassemble the glove compartment	11
4	Instructions to disassemble the back seat	12
5	Instructions to disassemble the coverings in the trunk	13
6	Instructions to disassemble the underbody covering	14
7	Instructions to disassemble the sound generator	15
8	Instructions to route & connect the cable	16
9	Instructions to route & connect the cable	17
10	Instructions to route & connect the cable	18
11	Instructions to assemble / route the cables of the button	19
12	Notes for the software	21
13	Notes for the software	22
14	Notes for the software	23
15	Instructions for the LED Status Display / Troubleshooting	24