



Installation Instructions
Complete Set Active Sound incl. Soundbooster
VW T6
v1.1 (26.05.2017)

Contents

| | | |
|-----------|--|-----------|
| 1 | Liability Exclusion | 3 |
| 2 | Copy Right | 4 |
| 3 | General Notes | 4 |
| 4 | Safety instructions | 5 |
| 5 | Requirements for the determinable operation | 5 |
| 6 | Note | 5 |
| 7 | How to connect a cable to another | 6 |
| 8 | Note Cable Inscription/Color | 7 |
| 9 | Assembly Instructions | 8 |
| 10 | Removing trim panel driver's side | 9 |
| 11 | Removal driver's seat | 11 |
| 12 | Loosening of the seat console | 12 |
| 13 | Connection cable set | 13 |
| 14 | Connection ignition lead / control units | 14 |
| 15 | Routing connecting cable sound generator | 15 |
| 16 | Installation sound generator / pushbutton | 16 |
| 17 | Important Information Sound Booster | 17 |

1 Liability Exclusion

Dear Customer

Our cable sets are developed according to the connection- and circuit diagrams of the corresponding car manufacturer. Before the original production the cable sets will be tested on an original car. Therefore, the integration into the car electronics will be executed according to the instructions of the manufacturer. Regarding the necessary pre-understanding and the accuracy of the presentation of texts and pictures our mounting guidelines correspond to the usual ones in car technology and car electronics. Practically, they have been proved one's worth a hundred times.

However, should there be any difficulties during the installation of our products we will be at your disposal any time for support by phone or by mail. Moreover, we offer you to execute the installation at our works in Bad Segeberg.

Costs which may arise because a third person will execute the installation of our products will not be supported by us in any case. Only if there is a mistake caused by our product we will pay the proved costs of the installation as well as the costs of the removal of the defective product. The refund of expenses will be limited to gross EUR 110,- ; we reserve the right to check the described mistake in our works in Bad Segeberg. In case of a proved reclamation the costs for dispatch for the check in our factory will be transferred to you.

According to our experience each specific factory which has the necessary diagnostic device, diagnostic software and the circuit diagrams of the manufacturer can find possible mistakes at our products within a short time. So the installation and removal including diagnostic inspection can be realised in at most 60 minutes.

We also made the experience that many specific factories cannot work with the circuit diagrams of the manufacturer, and that they cannot read usual wiring diagrams. Therefore, very easy installation works will take many hours. You will understand that we neither take the risk to find a reliable specific factory nor the financing of the training of the staff of your favoured factory.

Costs which will arise because you buy missing parts or spare parts at other suppliers will be refunded by us up to the amount of the costs which had been arisen by additional supply (saved expenses). In this case, there would be no right for refund according to the legal guarantee right as long as we have no deadline for supplementary performance or a deadline for supplementary performance has not expired.

So if you have any problems with the installation or operation of one of our products please call us, send us an email, send us the product or take your car to our factory in Bad Segeberg. We are sure to find an appropriate solution for each concern.

With best regards
Your Kufatec GmbH & Co. KG Team

2 Copy Right

Our installation- and removal instructions, installation plans, software and other documentation with texts or pictures are protected by copy right.

A publication or distribution of these documents is only permitted with a written approval of Kufatec GmbH & Co. KG.

3 General Notes

Regarding the development there has especially been paid attention to your personal safety together with the most possible operating comfort, modern design and actual product technologies.

Despite most possible accuracy in case of incorrect installation or use or in case of incorrect operating, it is possible that injuries or damages of property may arise.

Therefore, please read the operating instructions you have received carefully and completely, and keep it with you.

All articles of our production will be checked at 100% — for your safety.

We reserve the right to make technical changes which serve the progress at any time.

Before the installation or startup it may be necessary, depending on the article and purpose of use, to check the legal instructions of each country.

In case of warranty claim the device has to be sent to the seller originally packed together with the sales receipt and a detailed description of the mistake. Please consider the manufacturer's instructions for return (RMA). The legal warranty instructions are valid.

The warranty claim and also the permission for startup will expire in case of:

- unauthorised changes on the device or the accessories which have not been executed or approved by the manufacturer or its partners
- opening of the box
- repair of the device on your own
- incorrect use / no normal use / startup
- influence of force on the device (falling down, wilful damage, accident, etc.)

During the installation please consider all safety and legal instructions. The device may only be installed by trained qualified personnel or persons who are similar qualified.

In case of installation- or function problems please reduce the search of the mistake to approx. 0,5 hours for mechanical works or 1,0 hours for electronic works.

To avoid unnecessary additional work and expenses, please send immediately an inquiry to our technical support with the Kufatec contact form (<http://www.kufatec.de/shop/de/infocenter/>)

Please absolutely mention the following:

- car chassis number
- part number of the add-on kit
- exact description of the problem
- work steps already made

4 Safety instructions

The installation may only be executed by trained qualified personnel. Please execute the installations only in a condition of dead voltage. Here please separate for example the battery from the main power supply and consider the instructions of the car manufacturer.

- In order to not endanger your own driving safety please never use security relevant screws, bolts or other fixation pieces at steering, brake system or other components.
- Connect the device only at 12V wiring system voltage with ground connection to the autobody. This assembly is not allowed for the use in trucks or other cars with 24V wiring system voltage.
- Please avoid the installation of the device at positions where the driving safety or the functional efficiency of other subassembly integrated in the car are restricted.
- This module may only be used together with the following mentioned car types and models; the installation may be executed exclusively by use of the circuit points mentioned in the assembly instructions.
- Kufatec GmbH & Co. KG does not assume liability for damages which are caused by incorrect installation, the use of inapplicable circuit points or the installation into car types and -modules which are not foreseen.
- We would like to draw your attention to the fact that the module processes the data of the MOST-protocol of the car mentioned below. Therefore, during the installation of the module it will be used a model-specific complete system which we as the manufacturer of the mentioned construction line only know partly.
- Especially in case of changes within the same model line and the same year we therefore cannot guarantee the applicability of our construction line in each case. Kufatec GmbH & Co. KG does not assume liability for the applicability of our construction line with changes made by the manufacturer.
- Kufatec GmbH & Co. KG does not assume liability that the installation of the here described component has been permitted according to the guarantee instructions of particular car manufacturers. Therefore, please consider the guidelines for installation and guarantee conditions of your car manufacturer before installation.
- The manufacturer reserves the right to change components without giving reasons.
- Subject to errors and changes

5 Requirements for the determinable operation

Please use the device only in its the corresponding area.

In case of unprofessional and untypical use, installation or modification the permission for operation and the warranty claim will expire.

6 Note

Make sure that there's enough space at the described position. If there is no space please cancel the installation and contact our technical support.

The use of a sound booster is not permitted without registration in the vehicle papers, in the area of the german StVZO. The noise emission of the vehicle is increased by this retrofit. The regulations of the StVZO must be observed. It is therefore recommended to ask for a specific registration option at the responsible TÜV/DEKRA office before retrofitting. Outside Germany, please observe the laws on vehicle licensing applicable in your country.

7 How to connect a cable to another

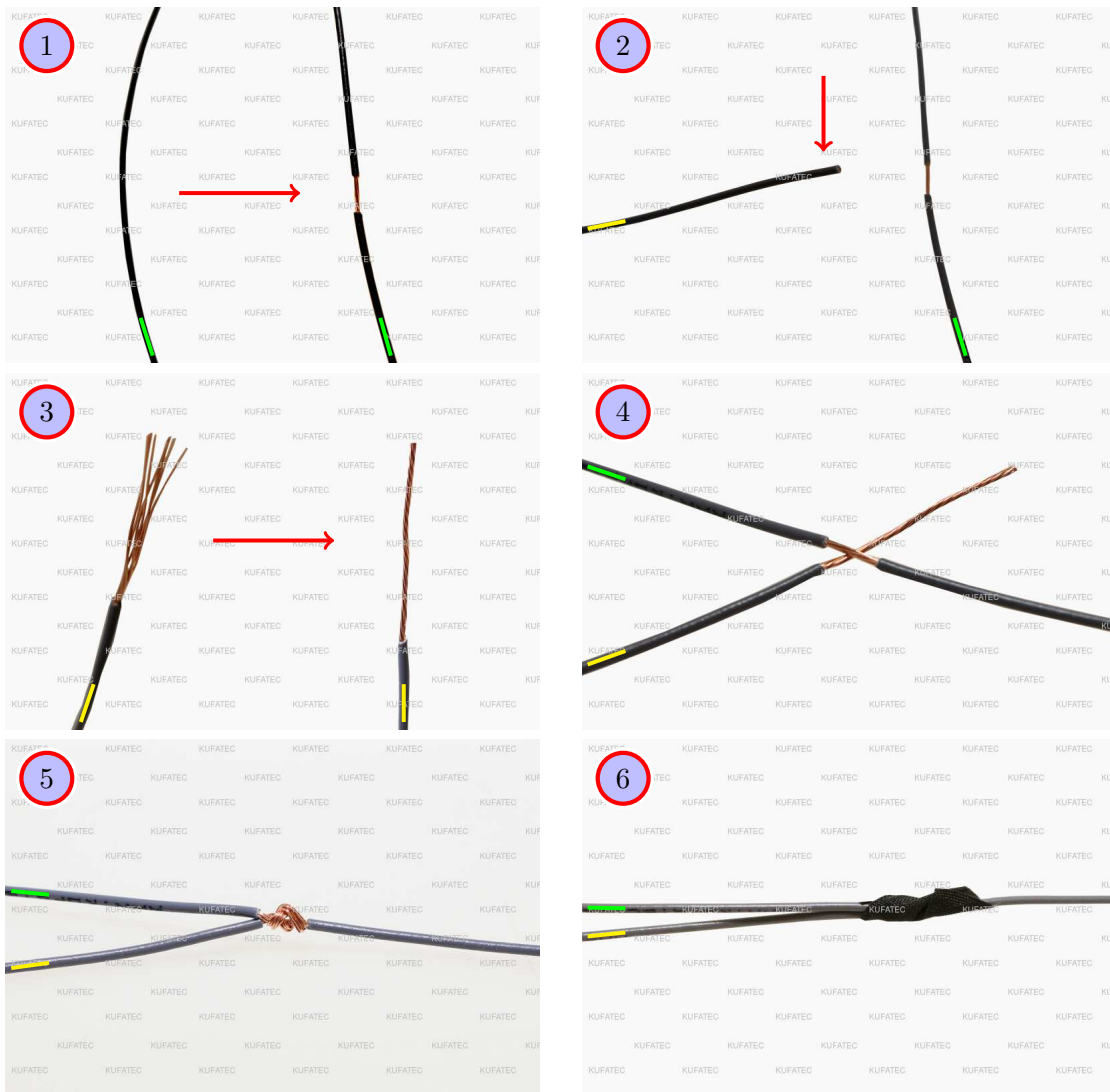


Figure 1: How to connect a cable to another

Table 1: How to connect a cable to another

| No. | Work step | Note |
|-----|--|------|
| 1 | Take the cable of the vehicle, to which you want to connect, (green marked here) and strip the insulation at one point with a suitable tool (cable stripper/cutter knife). | |
| 2 | Now take the cable of the cable set, which you want to connect, (yellow marked here) and strip the insulation at the end. | |
| 3 | Twirl the wires of the stripped cable together. | |
| 4 | Place the end of the cable you want to connect under the stripped point of the cable of the vehicle... | |
| 5 | ... and wrap the cable you want to connect around the cable of the vehicle. | |
| 6 | Lastly, stick insulating tape around the connection point. | |

8 Note Cable Inscription/Color



Figure 2: Cable Inscription

If our cable set consists exclusively of grey wires, connect the wires according to the cable inscription.

9 Assembly Instructions

The following illustration shows the cable routing as well as the position of the individual components.

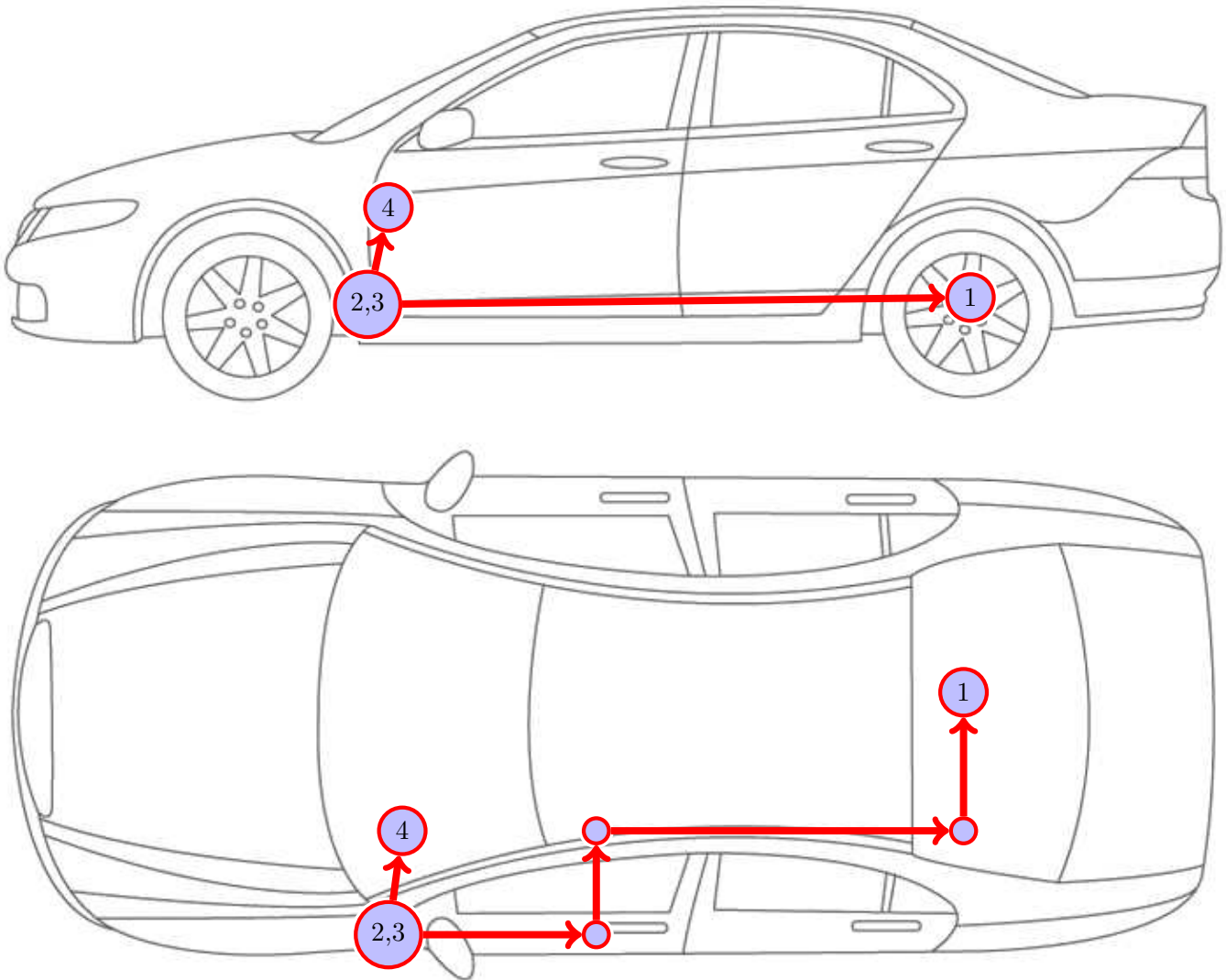


Figure 3: Vehicle overview

- 1 External sound generator incl. mounting plate
- 2 Control unit for engine sound generation
- 3 Sound Booster Pro (module)
- 4 Pushbutton

10 Removing trim panel driver's side

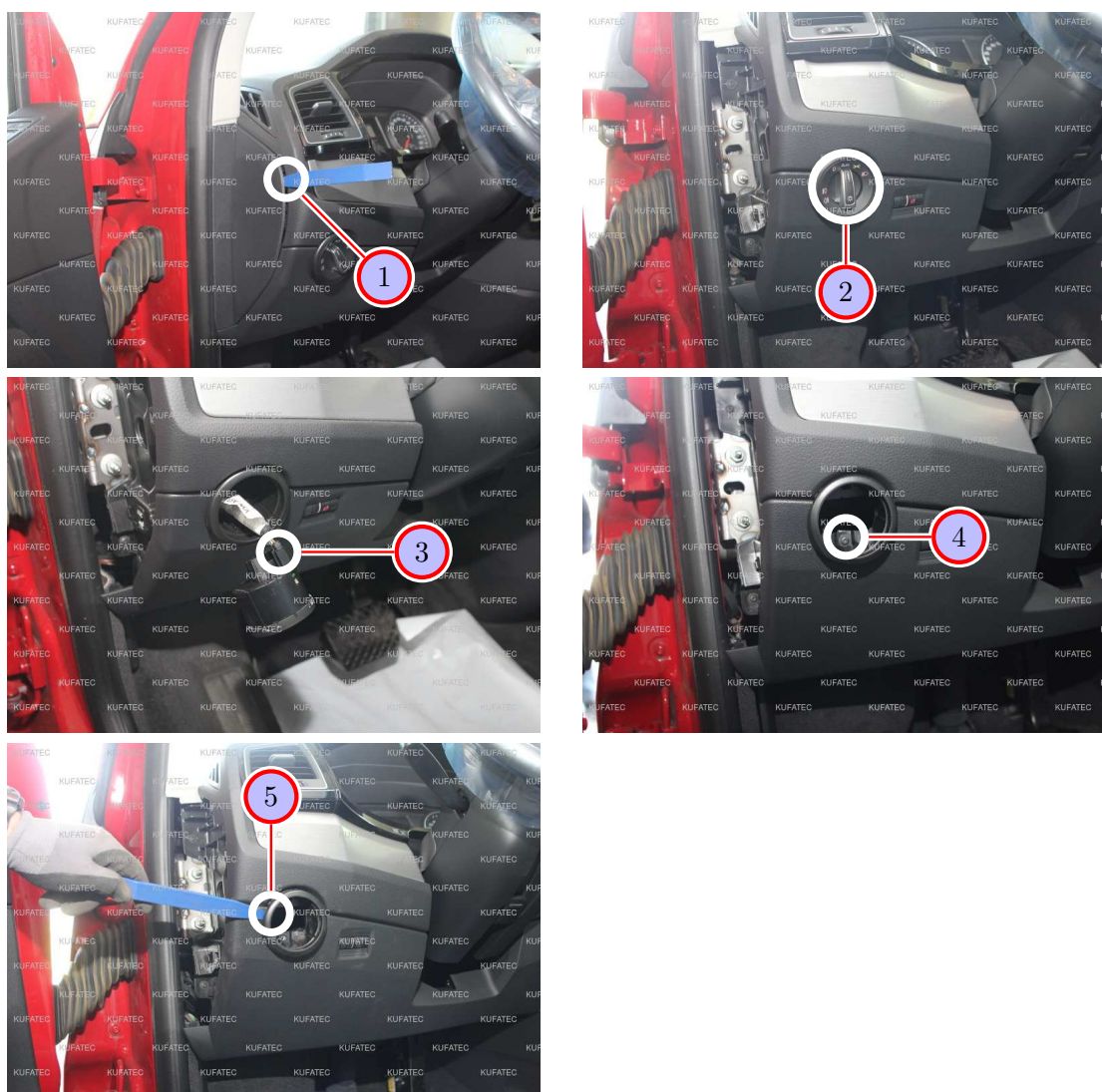


Figure 4: Removing trim panel driver's side

Table 2: Removing trim panel driver's side - instructions

| Nr. | Work step | Note |
|-----|--|-------|
| 1 | Loosen the lateral covering of the dashboard using a trim tool. | |
| 2 | Turn the light switch to 0. Press the light switch in and turn to Auto afterwards. Now the light switch inset is unlocked and can be pulled out. | |
| 3 | Remove the plug and take the light switch out completely. | |
| 4 | Loosen the marked screw of the front trim panel. | 1xT20 |
| 5 | Remove the covering of the light switch using a trim tool. | |



Figure 5: Removing trim panel driver's side

Table 3: Removing trim panel driver's side - instructions

| Nr. | Work step | Note |
|-----|---|------|
| 1 | Loosen the front trim panel of the dashboard using a trim tool and pull it a bit forward carefully. | |
| 2 | Remove the plug of the trim panel and take the trim panel out completely. | |
| 3 | Loosen and remove the lower trim panel of the dashboard with a trim tool. | |
| 4 | Loosen the sill trim with a trim tool and pull it a bit up. | |
| 5 | Remove the plug of the lighting (if existing) and take the sill trim out completely. | |

11 Removal driver's seat

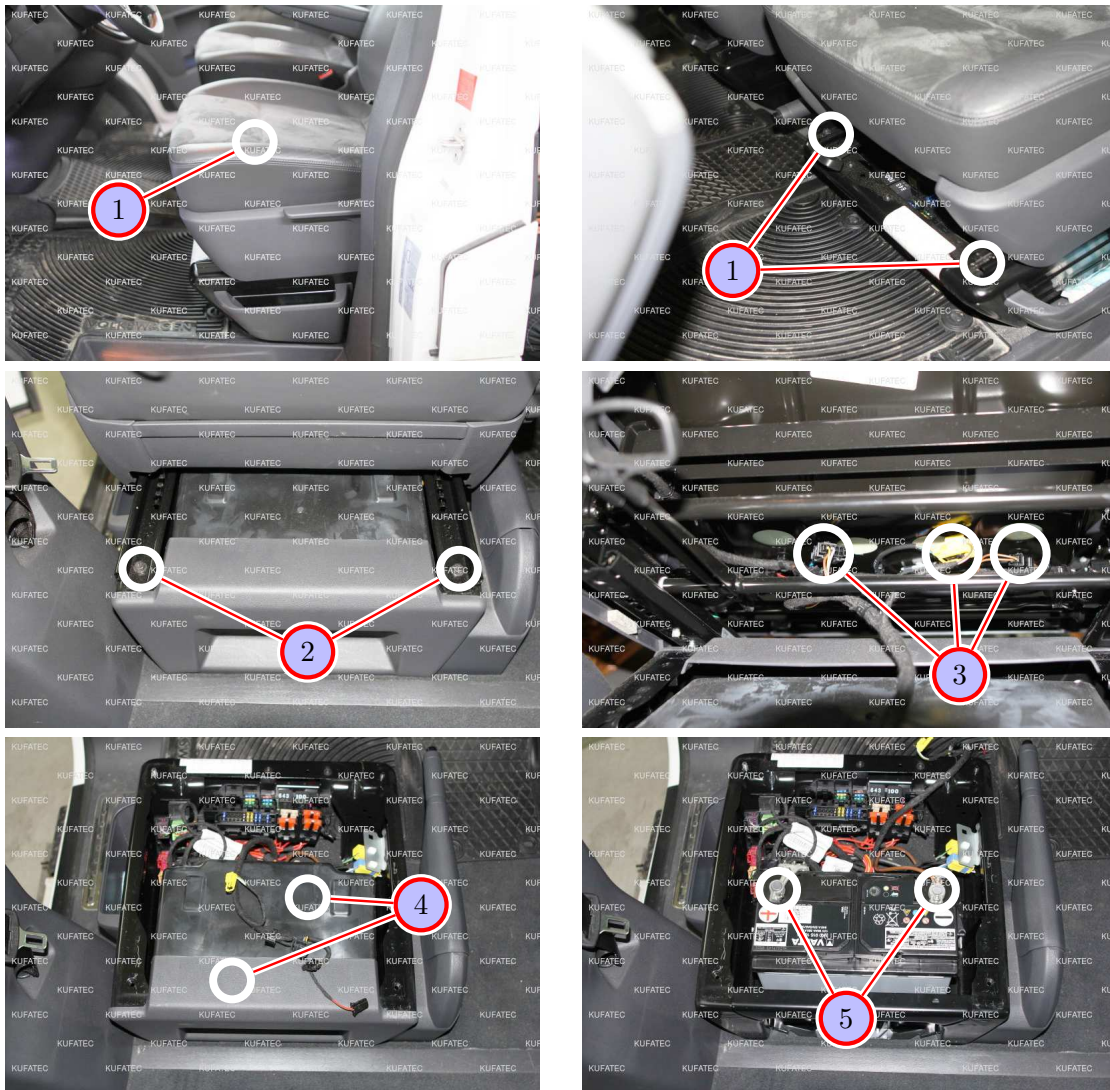


Figure 6: Removal driver's seat

Table 4: Removal driver's seat - instructions

| Nr. | Work step | Note |
|-----|--|---------------|
| 1 | Remove the driver's seat by loosening first the two screws ahead at the guide rails. | 2x13er socket |
| 2 | Then loosen the two screws behind at the guide rails. | 2x13er socket |
| 3 | Lift the driver's seat carefully and loosen all plug connections. Afterwards the seat can be taken out completely. | |
| 4 | Remove both coverings of the seat console. | |
| 5 | Loosen both battery terminals and remove the battery afterwards. | 2x10er socket |

12 Loosening of the seat console

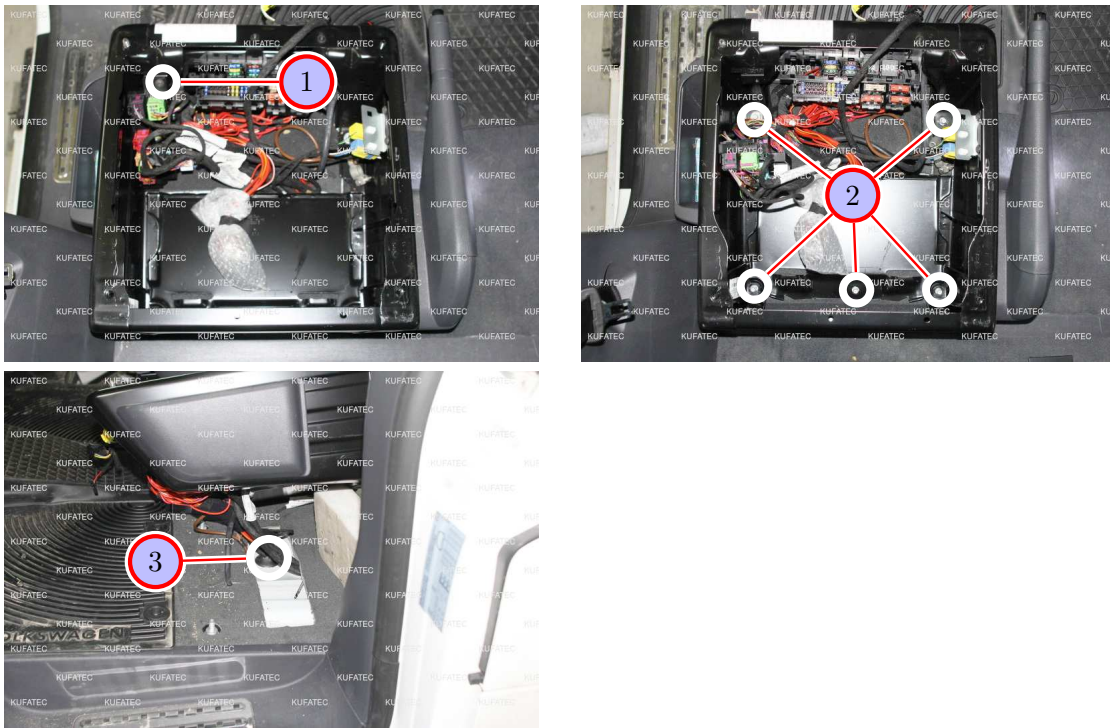


Figure 7: Loosening of the seat console

Table 5: Loosening of the seat console - instructions

| Nr. | Work step | Note |
|-----|---|---------------|
| 1 | Loosen the marked screw of the plug carrier. | 1xT30 |
| 2 | Loosen the marked screws of the seat console. | 5x16er socket |
| 3 | Lift the seat console up carefully and secure it with for example a foam wedge, so that you uncover the marked grommet. | |

13 Connection cable set

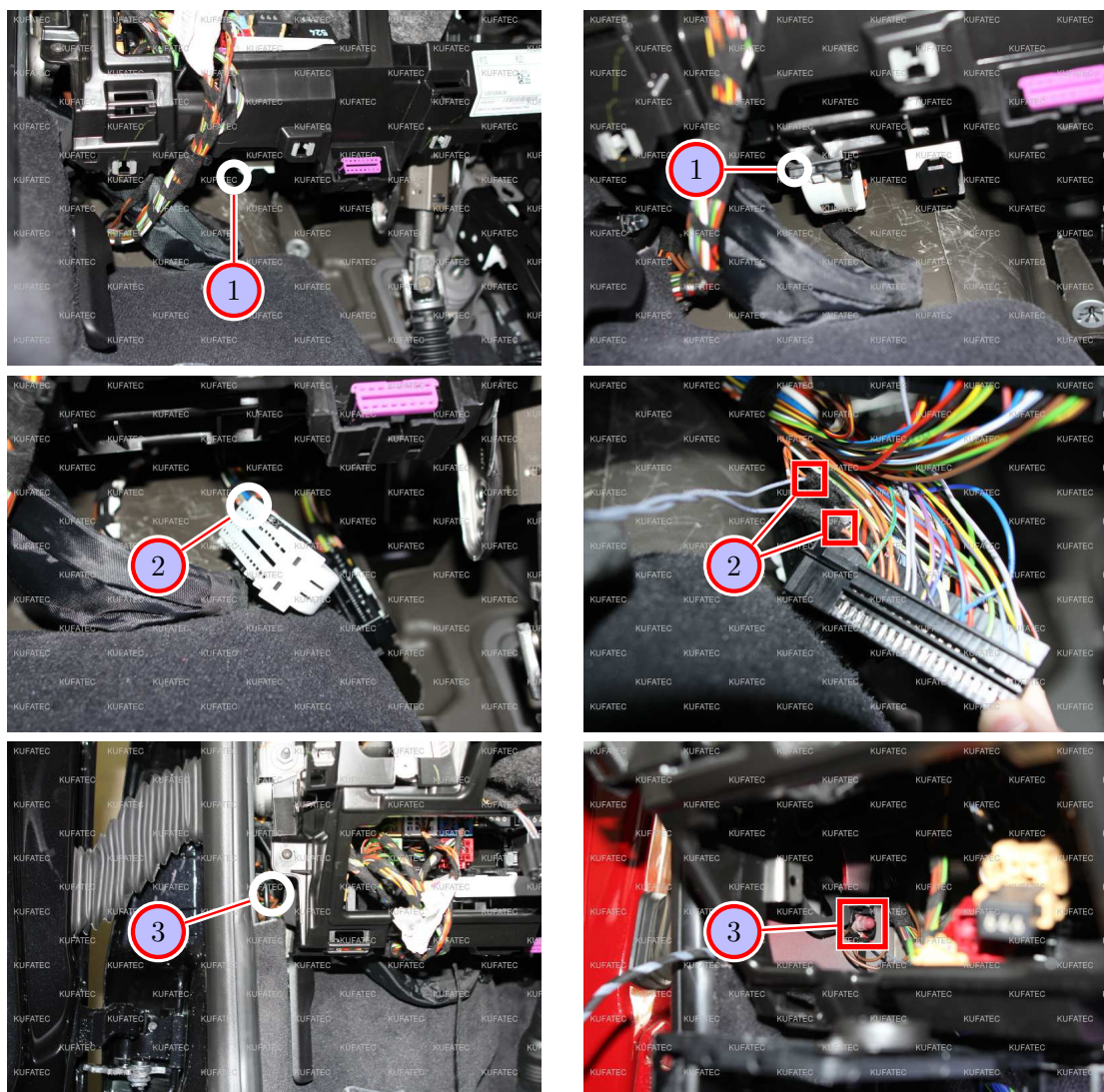


Figure 8: Connection cable set

Table 6: Connection cable set - instructions

| Nr. | Work step | Note |
|-----|---|---------------|
| 1 | Loosen the white plug of the electrical system control unit and pull it down. | |
| 2 | Remove the plug housing and connect CAN High & Low as follows: Solder CAN High (black/white) also to PIN 19 (orange/black). Solder CAN Low (black/yellow) also to PIN 18 (orange/brown). If our cable set consists exclusively of grey wires, please connect according to the cable inscription at the end of the wires. | |
| 3 | Connect the ground cable (brown) also to the marked ground spot at the a-pillar. | 1x10er socket |

14 Connection ignition lead / control units

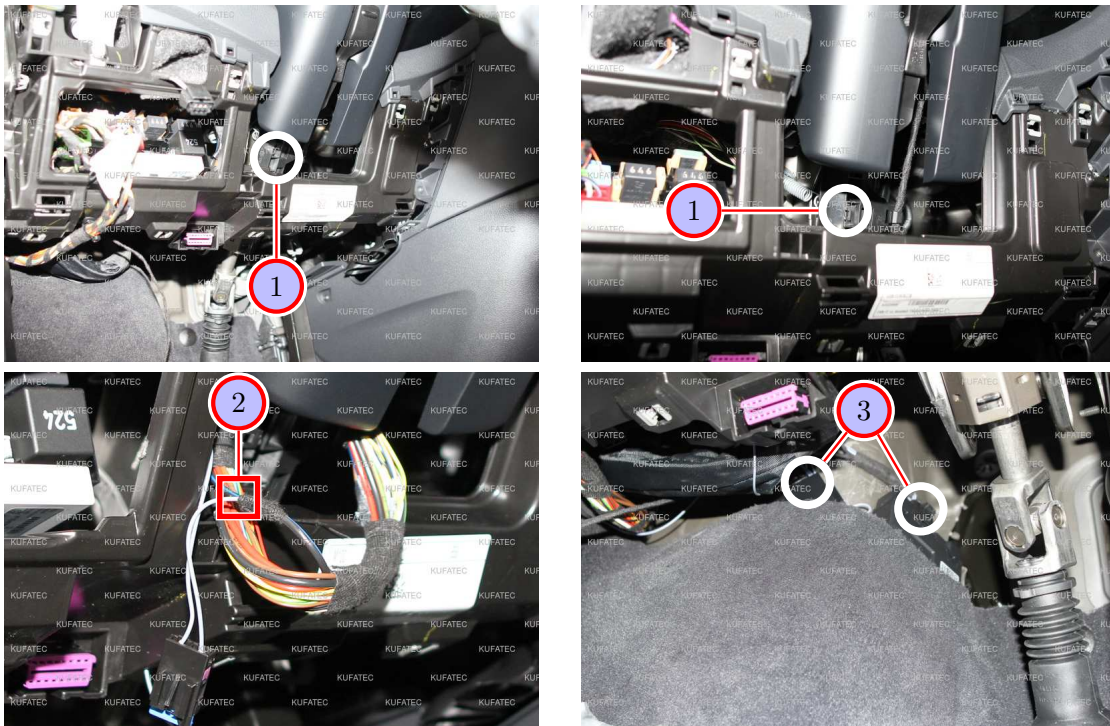


Figure 9: Connection ignition lead / control units

Table 7: Connection ignition lead / control units - instructions

| Nr. | Work step | Note |
|-----|---|------|
| 1 | Open the marked cable channel of the steering column and pull the black/blue 1,5 mm^2 cable a bit out. | |
| 2 | Now connect the cable for ignition lead (red/white) also to the black/blue 1,5 mm^2 cable. | |
| 3 | Connect the cable set with the module as well as the control unit and place them at the marked position under the carpet. | |

15 Routing connecting cable sound generator

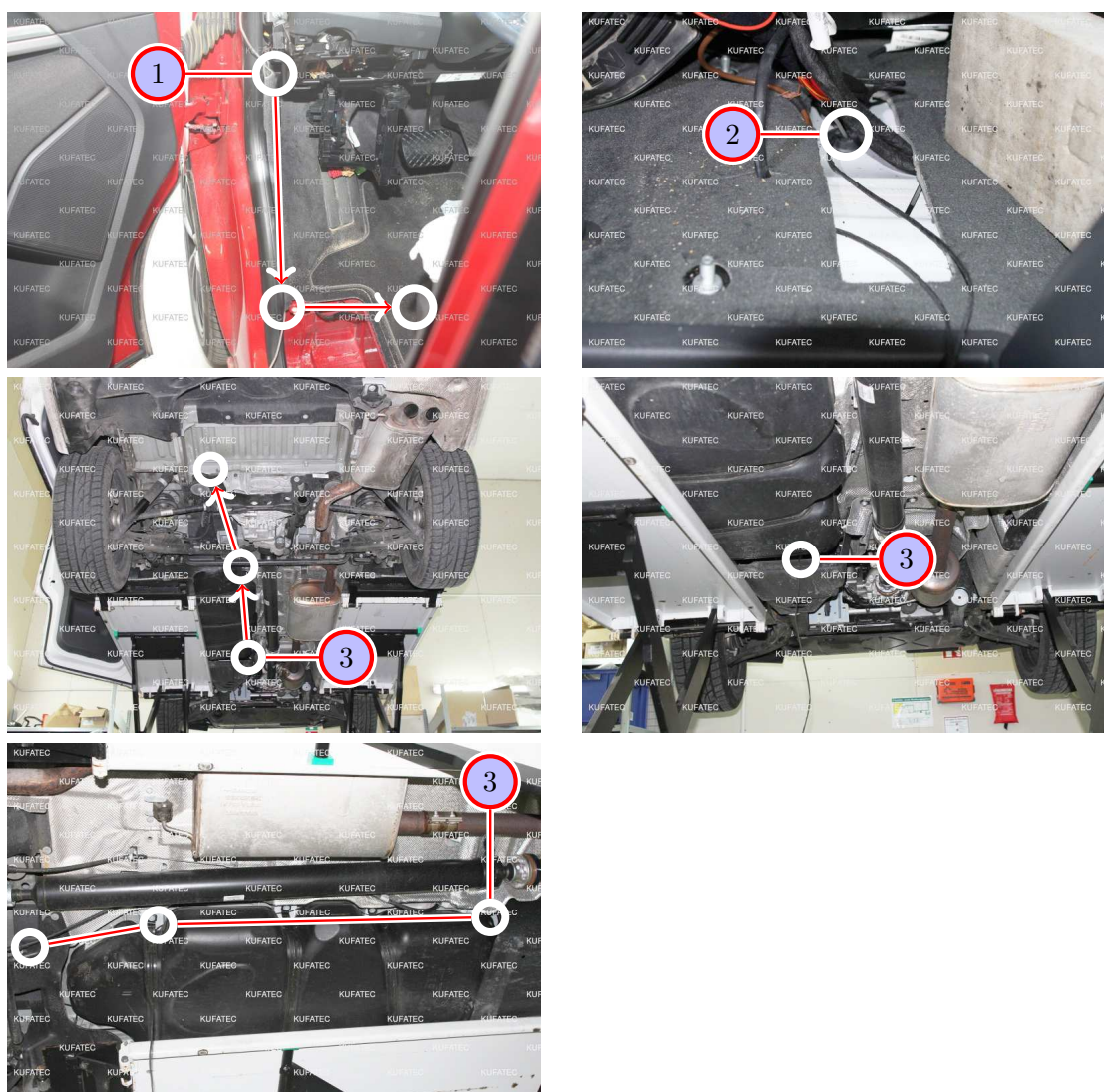


Figure 10: Routing connecting cable sound generator

Table 8: Routing connecting cable sound generator - instructions

| Nr. | Work step | Note |
|-----|--|------|
| 1 | Pull the connecting cable for the sound generator under the carpet of the footrest to the sill trim and afterwards under the carpet to the seat console. | |
| 2 | Guide the connecting cable through the marked grommet to the underbody. | |
| 3 | Pull the connecting cable further through and route it along the tank backwards to the marking. | |

16 Installation sound generator / pushbutton

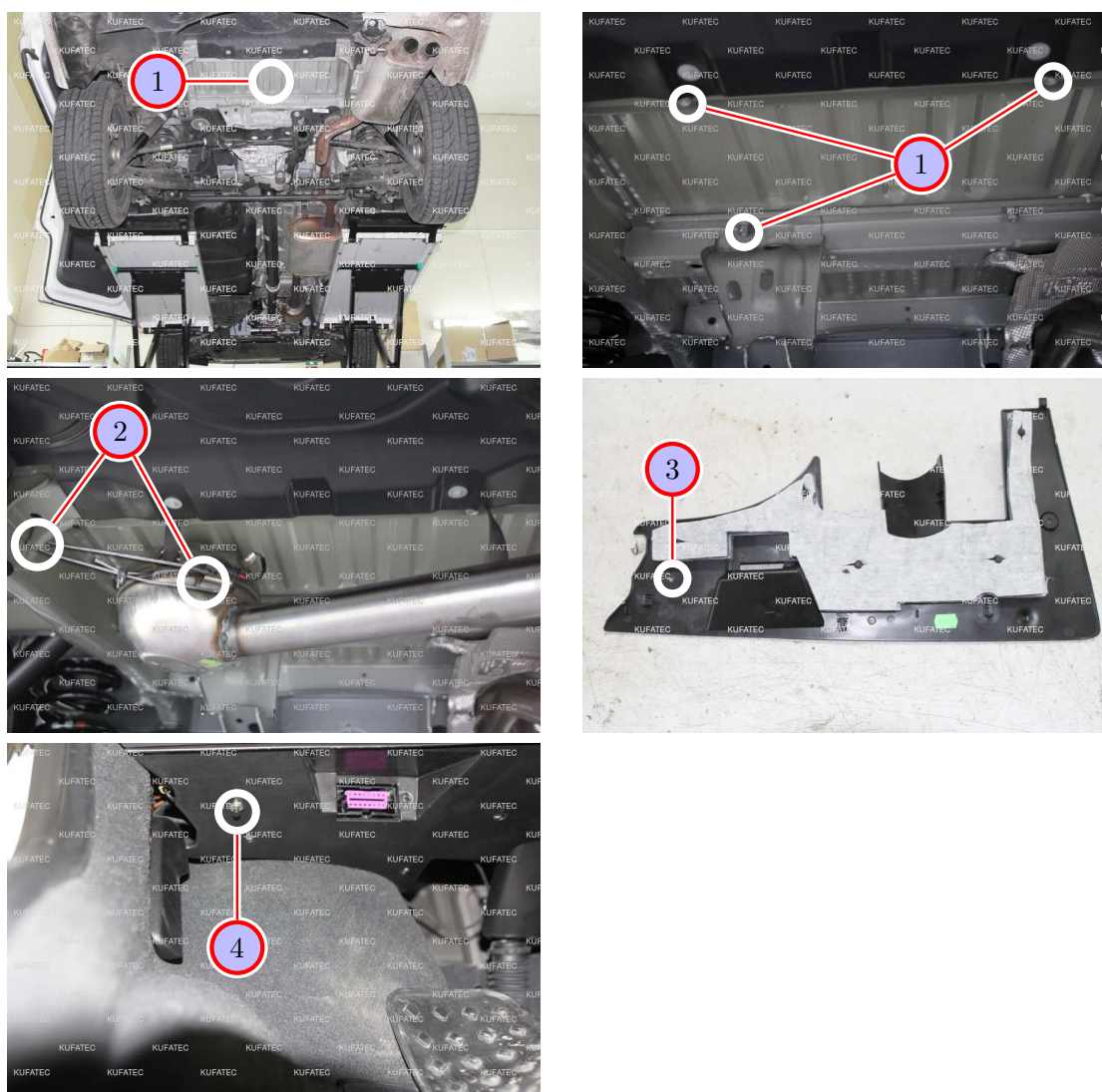


Figure 11: Installation sound generator / pushbutton

Table 9: Installation sound generator / pushbutton - instructions

| Nr. | Work step | Note |
|-----|--|---------------|
| 1 | Loosen the marked screws at the marked position and with these, fix the sound generator at the vehicle. | 3x16er socket |
| 2 | Connect the connecting cable to the sound generator. Afterwards attach the steel wire rope to the sound generator as well as to the vehicle. | |
| 3 | Drill a hole for the pushbutton at the marked position of the lower trim panel of the dashboard. | 7mm |
| 4 | Install the pushbutton at the lower trim panel of the dashboard. | |

17 Important Information Sound Booster

Please use for the fixation of the Sound Booster suitable high tensile screws. In order to avoid loosening of the screws by vibration please make the screws safe with appropriate factory material e.g Threadlock. Please additionally check the stability of the Sound Booster regularly and if necessary retighten the screws. In case of no consideration we do not assume liability for possible damages. After successful installation we recommend to cover the sound generator with a zinc spray. Make sure that you cover the opening of the sound generator so that no zinc spray can't get inside the sound generator.

As additional safety the delivered steel cable and the retaining clips have to be tightened on the Sound Booster as well as at a suitable position in the car. This safety cable is an additional security should the tightening screws should be released by vibration.

List of Figures

| | | |
|----|---|----|
| 1 | How to connect a cable to another | 6 |
| 2 | Cable Inscription | 7 |
| 3 | Vehicle overview | 8 |
| 4 | Removing trim panel driver's side | 9 |
| 5 | Removing trim panel driver's side | 10 |
| 6 | Removal driver's seat | 11 |
| 7 | Loosening of the seat console | 12 |
| 8 | Connection cable set | 13 |
| 9 | Connection ignition lead / control units | 14 |
| 10 | Routing connecting cable sound generator | 15 |
| 11 | Installation sound generator / pushbutton | 16 |

List of Tables

| | | |
|---|--|----|
| 1 | How to connect a cable to another | 6 |
| 2 | Removing trim panel driver's side - instructions | 9 |
| 3 | Removing trim panel driver's side - instructions | 10 |
| 4 | Removal driver's seat - instructions | 11 |
| 5 | Loosening of the seat console - instructions | 12 |
| 6 | Connection cable set - instructions | 13 |
| 7 | Connection ignition lead / control units - instructions | 14 |
| 8 | Routing connecting cable sound generator - instructions | 15 |
| 9 | Installation sound generator / pushbutton - instructions | 16 |